

# Air Hand Dryer AK2630

---



2630SM003-V2.1

# Feature

- Zip size save space to install
- Removable filter, easy to clean and replace
- 105 m/s airflow come out from the long strip outlet, faster to dry
- Heat system automatic on/off according to the ambient temperature
- Auto adjustment of the sensing distance

## Customize your dryers' temperature:

1. Turn on the intelligent heat system. When the room temperature is higher than 25°C, It blows normal temperature air (550W). When the room temperature is below 25°C, It blows warm air (1400W)
2. Turn off the intelligent heat system. It blows normal temperature air (550W).
3. Turn on the intelligent heat system. Remove the temperature sensor(Explanation in the instructions), It always blows warm air (1400W).

## SPECIFICATIONS

### ELECTRICAL

VOLTS	WATTS	NO HEAT WATTS	HERTZ	MOTOR
100-130V/220-240V	1400-1650W	550W	50/60 Hz	Universal Motor
DRY TIME	TEPERATURE	MATERIAL	AIR SPEED	
10-15 S	20-40° C	ABS	105 M/S	

### DIMENSIONS

**Height** 235 mm(9.3") **Width** 250 mm(9.8") **Depth** 165 mm(6.5")

### ACTIVATION

Automatic Sensor Operated

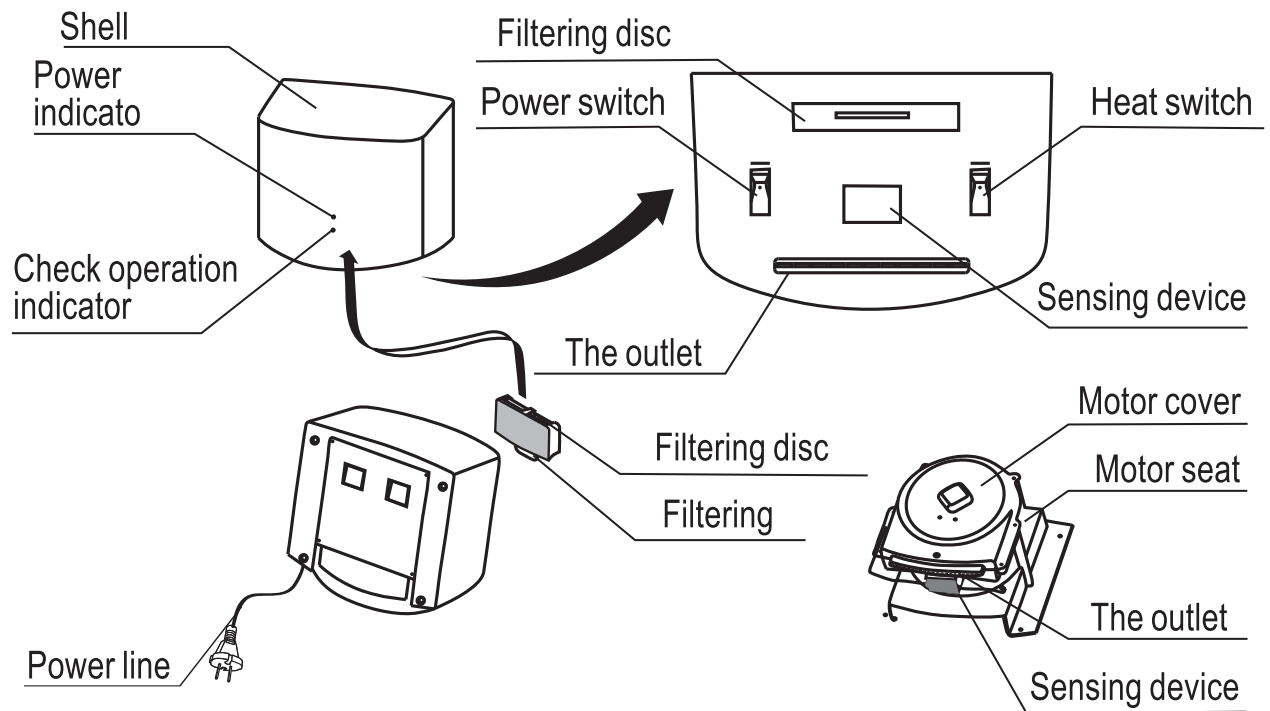
### MOUNTING

Surface Mounted

### WEIGHT

3.7kg (8.2 lbs)

# Parts name



# Electrical diagram

