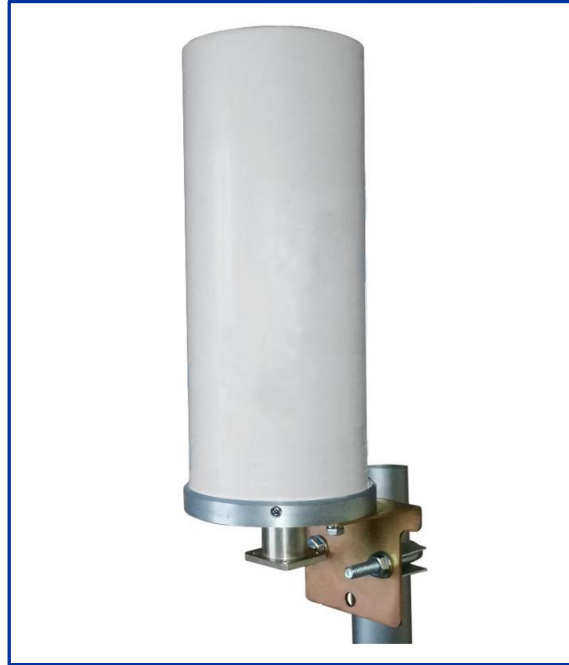


Ku-band Omnidirectional transmitting antenna

Overview:



Outline

Ku-band Omnidirectional transmitting antenna (slotted waveguide antenna, SWA) is designed for MVDS broadcasting systems at Ku-band range. It has 360 deg pattern, 1 GHz bandwidth and high Gain 12dBi. Ku-band OMNI SWA has compact dimensions, can be installed with minimal visibility and windage.

Signal transmitted by such antenna can be received by typical Ku-band SAT dish and LNB.

Features:

- Radiation pattern: 360 deg
- Bandwidth: 0.8-1 GHz
- Gain: 12 dBi
- Compact dimensions
- Easy to install

Specifications:

Parameter	Value
Frequency range	10.7-11.5GHz;10.7-11.7 GHz
Gain	12 dBi
Gain variation in the aperture, , not more	±2 dB
VSWR, max	2
Polarization	Linear, horizontal, vertical (by order)
Cross-polarization, dB, not less	25
HPBW:	
@horizontal	360°
@vertical	9°
Input power, , up to	<20 W
Waveguide	WR-75 flange
Operating temperature, ° C	-40 ~+80
Humidity	100% @ 25°C
Dimensions	250x60x60 mm
Weight	1 kg
Mount	Mounting on a vertical pipe with a diameter of 45mm
Casing material	dust/moisture proof