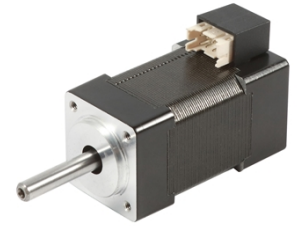
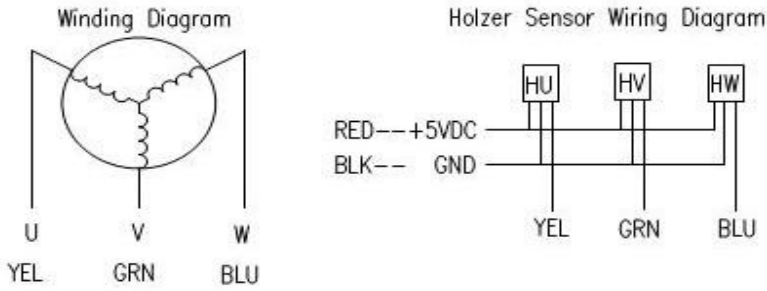
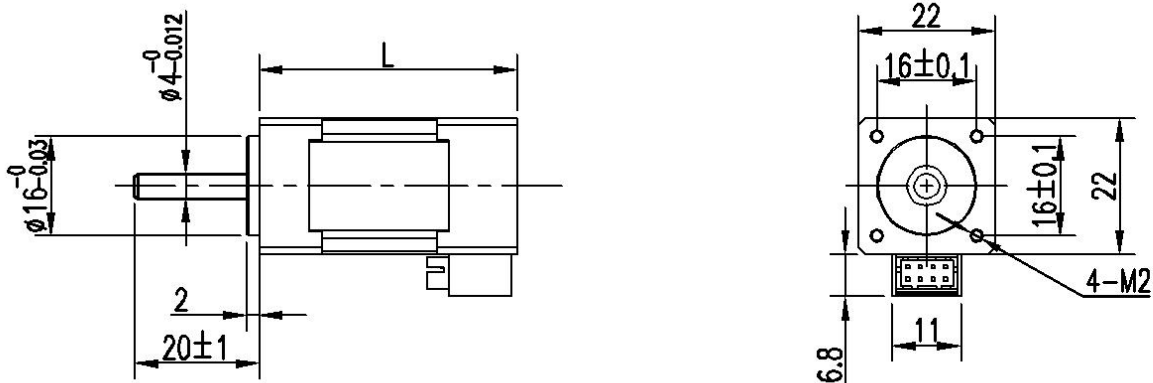


Wiring Diagram



Appearance Size & Motor Installation



Motor Electrical Specification

Motor Model	D225-0102	D225-0212	D225-0306
Number of Phase	3	3	3
Number of Poles	4	4	4
Rated Voltage(VDC)	24	24	24
Rated Speed(Rpm)	3000	3000	3000
Rated Torque(N.m)	0.01	0.02	0.03
Rated Power(W)	3	6	9
Rated Current(A)	0.2	0.4	0.6
Peak Current(A)	0.6	1.2	1.8
Peak Torque(N.M)	0.03	0.06	0.09
Rotor Inertia(kg.cm ²)	0.01	0.02	0.03
Torque Constant(N.m/A)	0.05	0.05	0.05
Torque Constant(V/krpm)	4.5	4.5	4.5
Line-Line Resistance(Ω)	2.1	3.2	3.9
Line-Line Inductance(mH)	1.1	1.3	1.5
Length(mm)	31.5	41.5	51.5
Weight(kg)	0.2	0.3	0.4

* Note: We can manufacture products according to customer's requirements.

Optional accessory is the encoder and brake to match this product.

* Contact sales@ichmo.com.