

Smart Energy Meter & Management System
PRODUCTS CATALOG

上海方遁电气有限公司

Shanghai Fangqiu Electric CO.,Ltd

Add: Room1903,No.1958 North Zhongshan Road,Shanghai.China

Tel: 021-62129659 62129691 Fax: 021-62129670 Mobile: 181-1623-6766 186-0164-0573

E-mail: tianli0000@hotmail.com Website: www.fineco.cn www.fqmeter.en.alibaba.com

Company Profile

Shanghai Fangqiu Electric CO., Ltd, was founded in Shanghai in 2011. With 5 years development, Fangqiu becomes a global manufacturer and exporter of energy meter

Since the foundation, Fangqiu products have been closely associated with high quality technological developments in measurement instrument and AMR system. The energy meter product series includes active/reactive energy meter, prepaid energy meter, Modbus energy meter, M-bus energy meter, PLC energy meter, multi-tariff energy meter, multi function energy meter. Management software based on single PC or based on Web are available.

To meet the challenges of ever changing industry development, design and manufacturing processes are constantly improved. Fangqiu continues to have new products developed, so that Fangqiu can keep its competitive edge in product technology. The production line has been equipped with CP40LV SMT machine, SEM668 full-auto optical print machine and WIN4005 re-flow soldering machine etc...Fangqiu also made big investment to build a high standard laboratory, which has testing machines like: ESD generator, Electrical fast transient generator, Lightning surge generator, Oscilloscope, High/low temperature test box, etc.

With high request on enterprise management, Fangqiu got ISO9001:2008 approved and SGS MID D approved in April, 2013. has dozens of products been CE certificated and some of them pass SGS MID B. all the products from Fangqiu comply with newest international standard.

Company Pictures



Industrial Park

Company Pictures



Workshop

Qualification



ENERGY METER



EM115

Single phase two wires din rail
energy meter (analog)

230V AC
5(45)A
1600imp/kWh
1 module

EM415

Single phase two wires energy
meter with Modbus

230V AC
Ib:1.5A/10A
Imax:6A/100A
4 modules





EM418

single phase two wire multi-tariff energy meter with Modbus

230V AC

Ib:1.5A/10A

I_{max}:6A/100A

Multi-tariff function

Far infrared & RS485

4 modules

EM535 Modbus

Three phase four wire DIN rail energy meter

230/400V AC

Ib:1.5A/5A

I_{max}:6A/65A

5 modules





EM535 M-bus

Three phase four wire DIN rail energy meter

230/400V AC

Ib:1.5A/10A

I_{max}:6A/100A

5 modules

EM537

Three phase four wires multi-function din rail energy meter

230/400V AC

Ib:1.5A/10A I_{max}:6A/100A

Multi-tariff function

4 TOU rates , 10 time segments

Display V, A, kWh, Hz, PF and so on

Far infrared & RS485

5 modules





EM735 Modbus

Three phase four wires din rail
energy meter with Modbus

230/400V AC
Ib:1.5A/10A
Imax:6A/100A
7 modules

EM735 M-bus

Three phase four wires din rail
energy meter with Mbus

230/400V AC
Ib:1.5A/10A
Imax:6A/100A
7 modules





EM737

Three phase four wires din rail energy meter with Modbus

230/400V AC

Ib:1.5A/10A

I_{max}:6A/100A

Multi-function

Display V,A, kWh, Hz, PF and so on

7 modules

EM738

Three phase four wires din rail energy meter with Modbus

230/400V AC

Ib:1.5A/10A

I_{max}:6A/100A

Multi-function

Display V,A, kWh, Hz, PF and so on

7 modules





Single phase Smart energy Meter

Un :230V AC
Operational voltage:0.7~1.3Un (161-300V AC)
Current:10(60)A
50~60Hz ±10%
Standard compliance :
GB/T17215-2002 IEC62053-21:2003

Single phase Smart energy Meter

Un :230V AC
Operational voltage:0.7~1.3Un (161-300V AC)
Current:10(60)A
50~60Hz ±10%
Standard compliance :
GB/T17215-2002 IEC62053-21:2003





Three phase Prepayment Energy meter

Nominal voltage (Un): 230/400V AC

Operational voltage

0.7~1.3Un (161/279-300/520V AC)

Current:20(100)A

Standard compliance

GB/T17215-2002

IEC62053-21: 2003

Single phase Prepayment IEC energy Meter

Un :230V AC

Operational voltage:0.7~1.3Un (161-300V AC)

Current:10(60)A

50~60Hz ±10%

Standard compliance :

GB/T17215-2002 IEC62053-21:2003





ANSI socket single phase multi-function energy meter (1S/2S)

Form 1S: 120V AC (2W)

Form 2S: 240V AC (3W)

60 +/- 5% Hz

IEC61010-1[2001]

ANSI socket three phase energy meter (16S)

161/279 – 300/520V AC (3~)

IEC61010-1[2001]





PM835

Multi-functions Panel meter

Electricity Monitoring System

Programmable Management Relay

Intelligent Power Meter

Mini Power Energy Meter

Harmonic Protection Device

PM835S

Multi-functions Panel meter

3 Phase 4 Wire

$3 \times 230/400V$

6+1 LCD display

IEC 62052-11 and 62053-21



COMMUNICATION DEVICES



Portable M-bus Metering Data Collector

280C M-bus Concentrator with SD card





Fineco-201E rs232 rs485 converter
rs232 converter rs232 to rs485
converter

SEMC power data logger
energy data logger power
meter data logger



MANAGEMENT SYSTEM

Select Day or Month and Time you want
the software will collect data from the meter

The screenshot shows the 'System Management' software interface. The main window title is 'System Management(Ver 9.5.25.111015)' with a timestamp of '2014-12-22 15:23:42'. The menu bar includes 'Daily Operate', 'Query', 'Data Statistics', 'System Management', and 'About'. The toolbar contains various icons for system management.

On the left, there is an 'Equipment' list with 10 items, including MC ROOM 2A through 2F, MC ROOM 3A through 3C, and a SUBSTATION.

The central area is divided into several sections:

- Items:**
 - Single phase meter read items:**
 - Positive active energy
 - Voltage
 - Current
 - Power Frequency
 - Three phases meter read items:**
 - Current month positive kWh
 - Current month reverse kWh
 - Last 1mth positive kWh
 - Last 2mth positive kWh
 - Last 3mth positive kWh
 - Last 4mth positive kWh
 - Last 5mth positive kWh
 - Last 6mth positive kWh
 - Last 7mth positive kWh
 - Last 8mth positive kWh
 - Last 9mth positive kWh
 - Last 10mth positive kWh
 - Last 11mth positive kWh
 - Last 12mth positive kWh
 - Last 1mth reverse kWh
 - Last 2mth reverse kWh
 - Last 3mth reverse kWh
 - Last 4mth reverse kWh
 - Last 5mth reverse kWh
 - Last 6mth reverse kWh
 - Last 7mth reverse kWh
- User Files:**
 - Meter No.: 32
 - Serial number: 0013110290
 - Progress: communication indication
- Table:**

read	Serial_num	Meter	User name	Address	Tele	Meter ty	meter ip
<input checked="" type="checkbox"/>	0013110290	32	Asus	near Food Court 1	MC ROOM 2B	S	
<input checked="" type="checkbox"/>	0012090251	30	Audio Net	near Food Court 2	MC ROOM 2C	S	
<input checked="" type="checkbox"/>	0014004935	55	B308	near 3rdF CR (breaker off)	MC ROOM 3C	T	
<input checked="" type="checkbox"/>	0013110241	32	Bayo	near admin	MC ROOM 2A	S	
<input checked="" type="checkbox"/>	0012090118	26	BCG Digital	near Food Court 2	MC ROOM 2C	S	
<input checked="" type="checkbox"/>	0013502630	48	Beauty and Bar	near 3rdF CR	MC ROOM 3C	S	
- Reading frequency:**
 - Read every day
 - Read every month
- Auto read time:** 10:00:00
- Automatically generate statements

At the bottom, there is a 'Read-->' button and a status bar showing 'Operate items', 'Timing read meter', 'State', and 'System time 2014-12-22 15:23:42'.



Welcome to the Online Metering Service

10 Apr 15

Manage Your Meters ...
Email CSV file

Your Account ...
Username : Finecodemo

Meter Group: SHM Southern Valley House 6 Winnail Valley Rd Winchester SO23 0LD UK									
Meter	Description	Consumer	Meter Type	Total Reading	Reading Date	Service	Increment	Billed To	
30617457	SHM Office	SHM Communications Ltd	Electricity	20027	10/04/2015	Daily	32	01 Apr 15	
Meter Group: Customer - south									
Meter	Description	Consumer	Meter Type	Total Reading	Reading Date	Service	Increment	Billed To	

Meter No. 30847457

Shanghai Fangqiu Electric CO.,Ltd

EMS

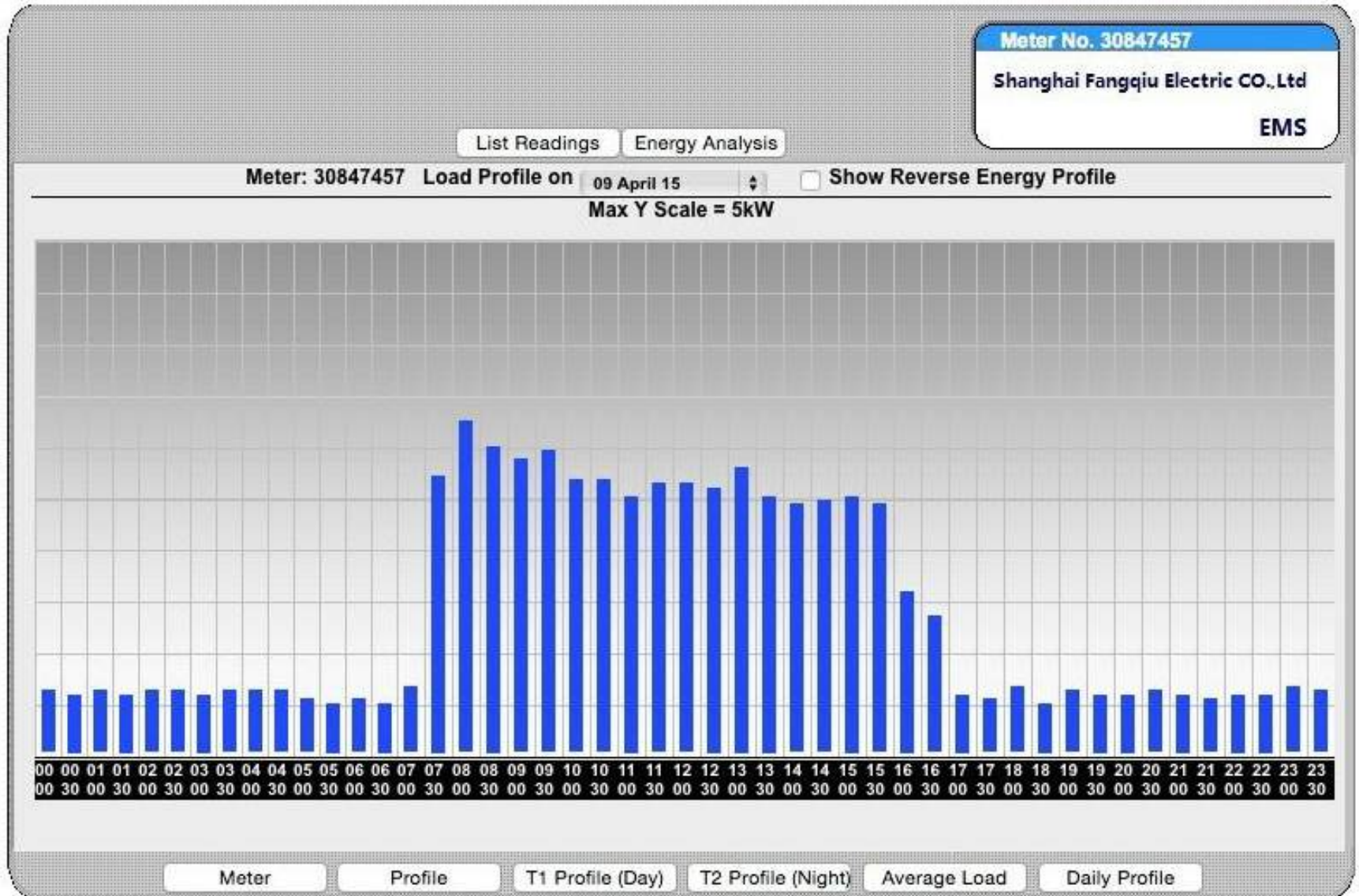
List Readings

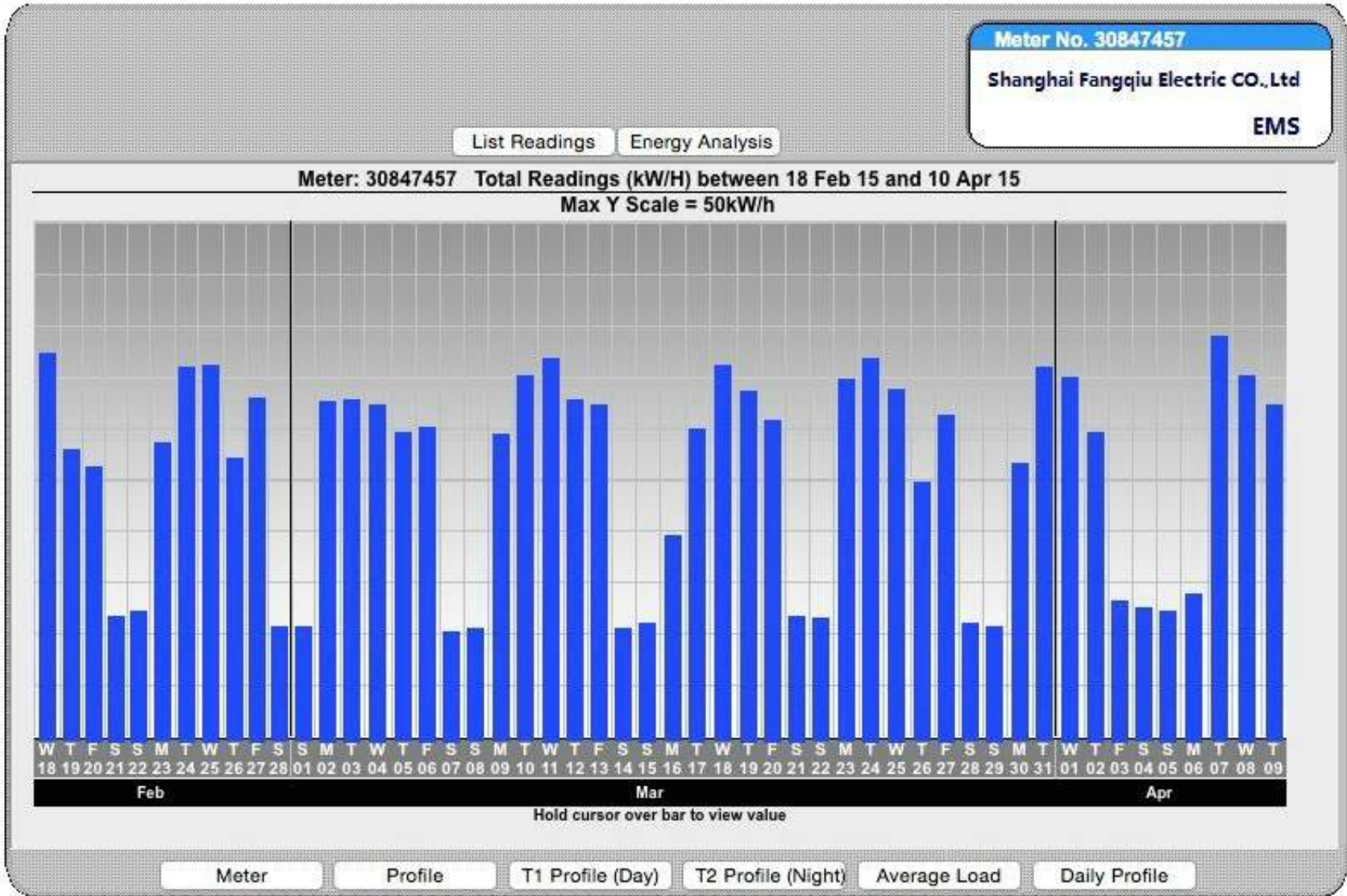
Energy Analysis

Reading Date Friday 10 Apr 2015

Meter: 30847457

Total kWh	20026	Average kW	09 Apr 15 to 10 Apr 15
			0.08 kW
Total Reverse Energy	0	Avg Reverse Energy kW	09 Apr 15 to 10 Apr 15
			0.00 kW





217.160.168.113

Meter: 30847457

Reading Type Total

Show Graph

Save as a CSV file

Reading Date	Reading	Incremental Value	kWh	End Date	End Reading
09-04-15	19994.76		32	10-04-15	20027
08-04-15	19959.76		35	09-04-15	19995
07-04-15	19921.02		39	08-04-15	19960
06-04-15	19906.8		14	07-04-15	19921
05-04-15	19894.22		13	06-04-15	19907
04-04-15	19881.38		13	05-04-15	19894
03-04-15	19867.82		14	04-04-15	19881
02-04-15	19838.16		30	03-04-15	19868
01-04-15	19803.3		35	02-04-15	19838
31-03-15	19767.52		36	01-04-15	19803
30-03-15	19740.92		27	31-03-15	19768
29-03-15	19729.8		11	30-03-15	19741
28-03-15	19718.48		11	29-03-15	19730
27-03-15	19687.18		31	28-03-15	19719
26-03-15	19662.42		25	27-03-15	19687
25-03-15	19628.7		34	26-03-15	19662
24-03-15	19591.98		37	25-03-15	19629
23-03-15	19557.36		35	24-03-15	19592
22-03-15	19545.52		12	23-03-15	19557
21-03-15	19533.42		12	22-03-15	19545
20-03-15	19502.68		31	21-03-15	19533
19-03-15	19469.14		34	20-03-15	19503
18-03-15	19433.2		36	19-03-15	19469
17-03-15	19403.26		30	18-03-15	19433
16-03-15	19383.58		20	17-03-15	19403
15-03-15	19372.18		11	16-03-15	19384
14-03-15	19361.3		11	15-03-15	19372
13-03-15	19329.12		32	14-03-15	19361
12-03-15	19296.48		33	13-03-15	19329
11-03-15	19259.84		37	12-03-15	19296
10-03-15	19224.88		35	11-03-15	19260
09-03-15	19195.5		29	10-03-15	19225
08-03-15	19184.6		11	09-03-15	19196
07-03-15	19173.96		11	08-03-15	19185
06-03-15	19143.86		30	07-03-15	19174
05-03-15	19114.3		30	06-03-15	19144
04-03-15	19082.04		32	05-03-15	19114
03-03-15	19049.26		33	04-03-15	19082
02-03-15	19016.68		33	03-03-15	19049
01-03-15	19005.66		11	02-03-15	19017
28-02-15	18994.68		11	01-03-15	19006
27-02-15	18961.8		33	28-02-15	18995
26-02-15	18934.72		27	27-02-15	18962
25-02-15	18898.7		36	26-02-15	18935
24-02-15	18862.82		36	25-02-15	18899
23-02-15	18834.22		29	24-02-15	18863
22-02-15	18821.66		13	23-02-15	18834
21-02-15	18809.58		12	22-02-15	18822

Energy Consumption Analysis

Compare readings from with readings from

[Update View](#)

Select Units/Interval Units/Hr Units/Day

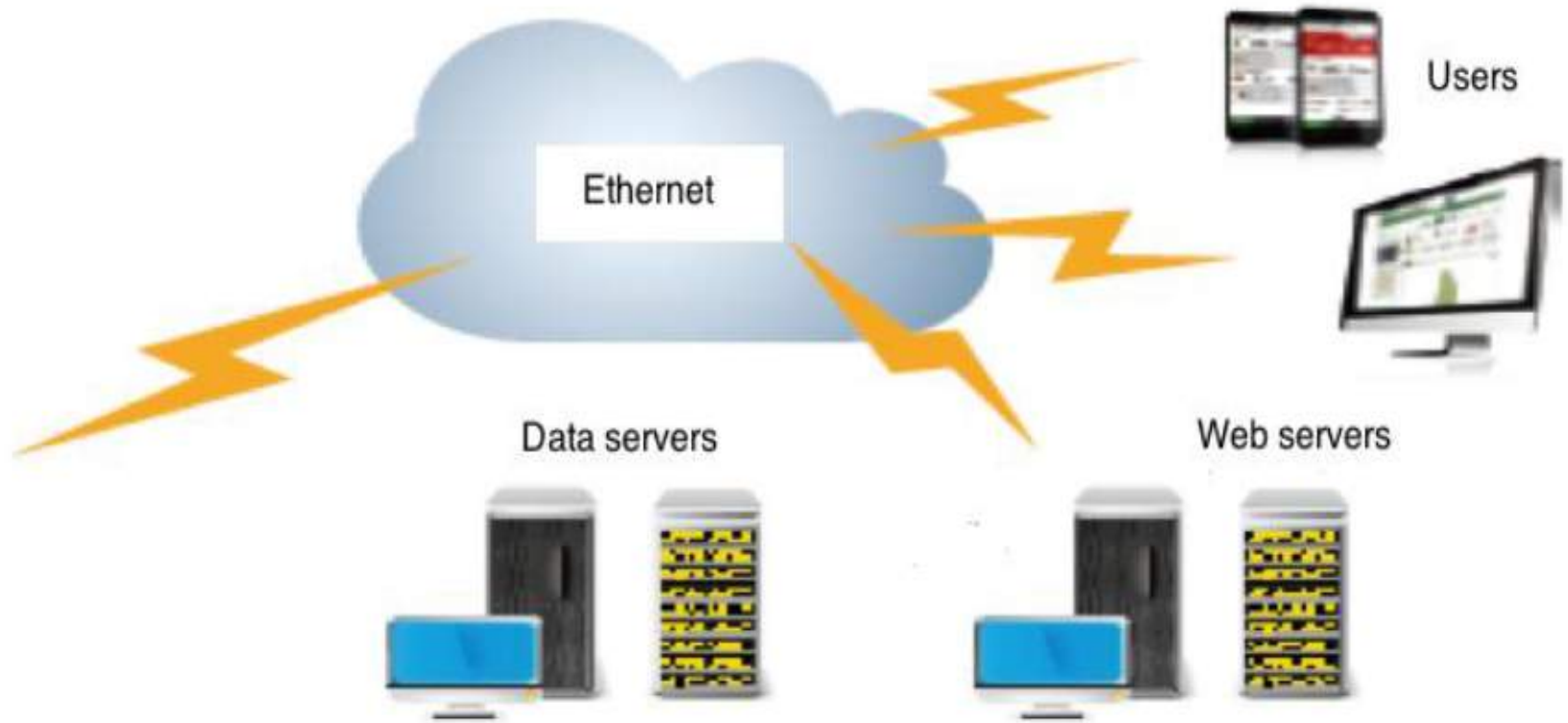


[Click here](#) to email us your comments on this feature.

Meter: **30847457** Location: **SHM Office** Meter Type: **Electricity** Service: **Daily** [Print](#)

From - To	Period	% Change	Units Used	Avg kWh/Hr	Cost T1	Cost T2	Cost T11	KgCO2
Thu 09 Apr 15 - Fri 10 Apr 15	1 Day	-8.6	32	1.3	£0.00	£0.15	£0.15	19
Wed 08 Apr 15 - Thu 09 Apr 15			35	1.5	£0.40	£0.15	£0.55	21
Value of Reduction -£0.40 -2								
Fri 03 Apr 15 - Fri 10 Apr 15	7 Days	-12.2	159	0.9	£1.60	£1.20	£2.80	95
Fri 27 Mar 15 - Fri 03 Apr 15			181	1.1	£1.60	£1.20	£2.80	109
Value of Reduction -£0.00 -13								
Fri 13 Mar 15 - Fri 10 Apr 15	4 Weeks	-5.3	698	1.0	£6.00	£4.50	£10.50	419
Fri 13 Feb 15 - Fri 13 Mar 15			737	1.1	£12.80	£5.85	£18.65	442
Value of Reduction -£8.15 -23								
Sat 10 Jan 15 - Fri 10 Apr 15	Quarter	+17.8	2371	1.1	£43.60	£19.50	£63.10	1,423
Fri 10 Oct 14 - Sat 10 Jan 15			2012	0.9	£292.40	£21.30	£313.70	1,207
Value of Reduction -£250.60 215								
Thu 10 Apr 14 - Fri 10 Apr 15	Year	-1.0	8619	1.0	£536.00	£67.05	£603.05	5,171
Wed 10 Apr 13 - Thu 10 Apr 14			8706	1.0	£550.80	£64.80	£615.60	5,224
Value of Reduction -£12.55 -52								

Tariff1 = £0.400/unit Tariff2 = £0.150/unit kgCO2 = 0.600/unit [Edit Tariffs](#)



TYPICAL CASE



Philippines SM Shopping Mall

The distribution center was built by Philipines A-CHE industrial control manufacturing,it has 1675 Units EM737 Series power monitor meter

Pudong WANDA Plaza

The distribution center was built by Jiangsu Maylion industrial control manufacturing,it has 1536 Units EM737 Series power monitor meter.other Exhibition center projects include:Gallery in Chengdu,Wuxi Exhibition center and soon





Hangzhou Citizen Center

The substation and power distribution box manufactured by Zhejiang Golden Shield electric, using EM737 series power monitor meter 1318, other government projects include: party school in Xiamen, Wuxi Patrol Center and so on.



Shanghai Raffles Cuty

This power distribution center was designed and installed by Shanghai Shoubang Company by using total 1316 Units Smart energy meters include EM 418,EM735,EM737

Shanghai Tongji University

The energy conservation project of the western and northern campus Tongji university were designed and installed by Shanghai Tongji construction engineering company by using total 465 Units smart energy meters include EM418,EM737



Marketing

