

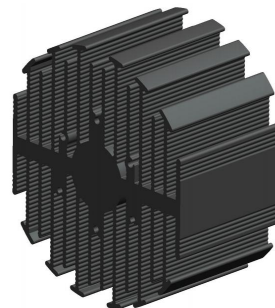


eLED

eLED-BRI-9550 Bridgelux Modular Passive Star LED Heat Sink Ø95mm

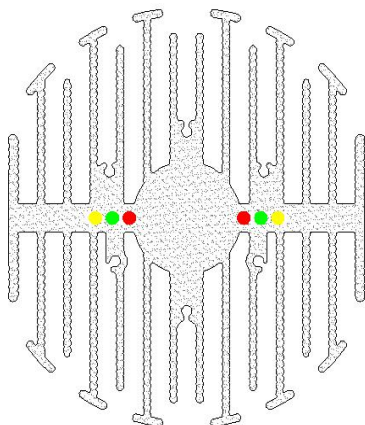
Features VS Benefits

- * The eLED-BRI-9550 Bridgelux Modular Passive LED Coolers are specifically designed for luminaires using the Bridgelux LED engines.
- * Mechanical compatibility with direct mounting of the LED engines to the LED cooler and thermal performance matching the lumen packages.
- * For spotlight and downlight designs from 1800 to 4500 lumen.
- * Thermal resistance range Rth 1.35°C/W.
- * Modular design with mounting holes foreseen for direct mounting of bridgelux Vero 13, Vero 18, Vero 29 and RS Array Series COB engines.
- * Diameter 95mm - standard height 50mm Other heights on request.
- * Extruded from highly conductive aluminum.



Bridgelux LED engine and radiator assembly directly Mounting Options

- * Below you find an overview of Bridgelux COB's and LED modules which standard fit on the Cool-LED Simpo coolers.
- * In this way mechanical after work and related costs can be avoided, and lighting designers can standardize their designs on a limited number of LED coolers.



Bridgelux LED Modules directly Mounting Options

Bridgelux ES Rectangle Array Series LED engines

- | | |
|---------------------|---------------------|
| BXRA-27E0800-x-xx ; | BXRA-35E0800-x-xx ; |
| BXRA-27E1200-x-xx ; | BXRA-35E1200-x-xx ; |
| BXRA-27E2000-x-xx ; | BXRA-35E2000-x-xx ; |
| BXRA-27G0800-x-xx ; | BXRA-40E0950-x-xx ; |
| BXRA-27G1200-x-xx ; | BXRA-40E1350-x-xx ; |
| BXRA-27G2000-x-xx ; | BXRA-40E2200-x-xx ; |
| BXRA-30E0800-x-xx ; | BXRA-50C1100-x-xx ; |
| BXRA-30E1200-x-xx ; | BXRA-50C1600-x-xx ; |
| BXRA-30E2000-x-xx ; | BXRA-50C2600-x-xx ; |
| BXRA-30G0800-x-xx ; | BXRA-56C1100-x-xx ; |
| BXRA-30G1200-x-xx ; | BXRA-56C1600-x-xx ; |
| BXRA-30G2000-x-xx ; | BXRA-56C2600-x-xx ; |

With the Zhaga book 3 holders, Gree indicator marks.

(B.J.B Holder:47.319.2040.50)

Direct mounting with machine screw M3x8mm;

Red indicator marks.

Bridgelux Vero 18 Array Series LED engines

- | | |
|---------------------|---------------------|
| BXRC-27E4000-F-xx ; | BXRC-30H4000-F-xx ; |
| BXRC-27G4000-F-xx ; | BXRC-35E4000-F-xx ; |
| BXRC-27H4000-F-xx ; | BXRC-40E4000-F-xx ; |
| BXRC-30E4000-F-xx ; | BXRC-50E4000-F-xx ; |
| BXRC-30G4000-F-xx ; | |

Direct mounting with machine screw M3x8mm;

Blue indicator marks.



eLED

eLED-BRI-9550 Bridgelux Modular Passive Star LED Heat Sink $\Phi 95\text{mm}$

Mounting Options and Drawings & Dimensions

Example: eLED-BRI-9550-B-3

Example: eLED-BRI-9550-**1**-**2**-**3**

- 1** Height (mm)
- 2** Anodising Color
 - B-Black
 - C-Clear
 - Z-Custom

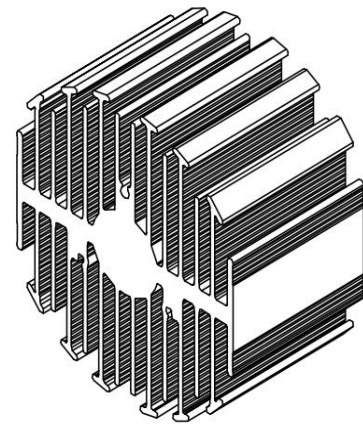
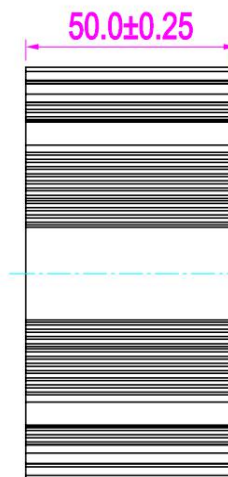
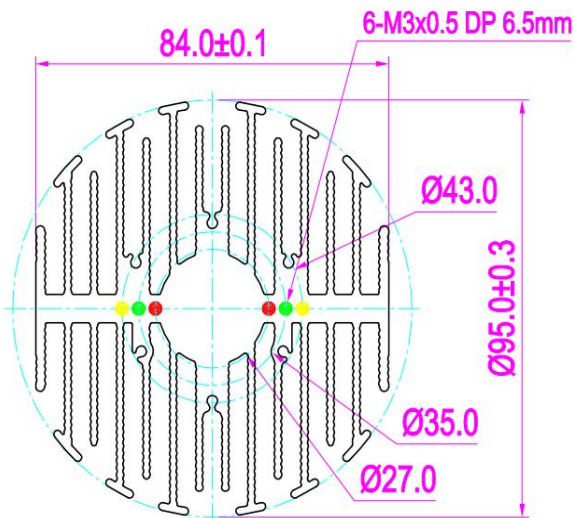
- 3** Mounting options;
 - On request;
 - Mounting holes, cable holes;
 - Screw thread, thermal interface pad.

Notes:

- Mentioned models are an extraction of full product range.
- For specific mechanical adaptations please contact MingfaTech.
- MingfaTech reserves the right to change products or specifications without prior notice.



MOUNTING OPTION	Module type	Holder NO.	THREAD	THREAD DEPTH	THREAD HOLE DISTANCE
1	ES-Rectangle	/	M3	6.5mm	27.0mm/ 2-@180°
2	ES-Rectangle	BJB 47.313.2040.50			35.0mm/ 2-@180°
3	Vero-29	/			43.0mm/ 4-@90°



The thermal data table

	 <i>eLED-9550</i>
Model No.	eLED-BRI-9550
Size	Φ95xH50mm
Material	AL6063-T5
Finish	Black Anodized
Weight(gr)	353
Thermal Wattage	40.5W
HeatsinkOs-a²	108320
Heat Sink T Rise Above Ambient	1.25

Dissipated Power Pd(W)	Pd = Pe x (1-ηL)	Heat sink to ambient thermal resistance Rhs-amb (°C/W)	Heat sink to ambient temperature rise Ths-amb (°C)
		eLED-BRI-9550	
10		1.80	18
20		1.40	28
30		0.97	29
40		1.25	50
50		1.18	59

