



for

LED

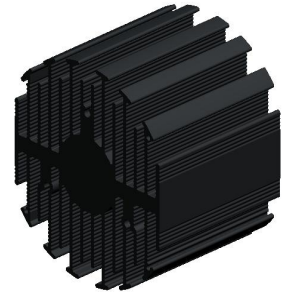


eLED

eLED-SAM-7050 Samsung Modular Passive Star LED Heat Sink Φ 70mm

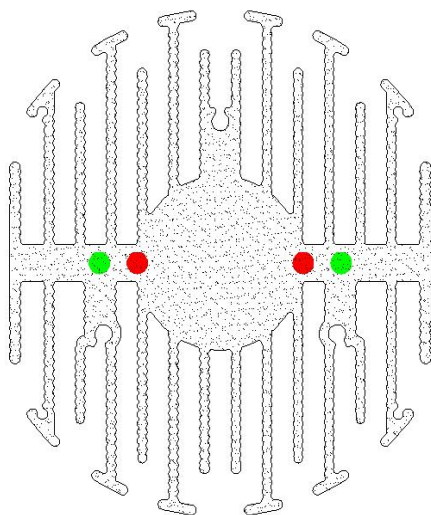
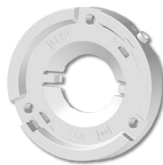
Features VS Benefits

- * The eLED-SAM-7050 Samsung Modular Passive LED Star Heat Sinks are specifically designed for luminaires using the Samsung LED engines.
- * Mechanical compatibility with direct mounting of the LED engines to the LED cooler and thermal performance matching the lumen packages.
- * For spotlight and downlight designs from 1000 to 2600 lumen.
- * Thermal resistance range R_{th} 2.18°C/W.
- * Modular design with mounting holes foreseen for direct mounting of Samsung COB LED engines.
- * Diameter 70mm - standard height 50mm Other heights on request.
- * Extruded from highly conductive aluminum.



Zhaga LED engine and radiator assembly is a unified future international standardization

- * Below you find an overview of Samsung COB's and LED modules which standard fit on the Star LED Heat Sinks.
- * In this way mechanical after work and related costs can be avoided, and lighting designers can standardize their designs on a limited number of Star LED Heat Sinks.



Samsung LED Modules Mounting indicator marks overview

For the LC019 B LED engines.

- SPHWW1HDNB25YHW32J;
- SPHWW1HDNB25YHV32J;
- SPHWW1HDNB25YHU32J;
- SPHWW1HDNB25YHT32J;
- SPHCW1HDNB25YHRT2J;

Direct mounting with machine screws M3x6mm;
Red indicator marks.

For the LC026 B LED engines.

- SPHWW1HDNC27YHW32F;
- SPHWW1HDNC27YHV32F;
- SPHWW1HDNC27YHU32F;
- SPHWW1HDNC27YHT32F;
- SPHWW1HDNC25YHW32F;
- SPHWW1HDNC25YHV32F;
- SPHWW1HDNC25YHU32F;
- SPHWW1HDNC25YHT32F;
- SPHCW1HDNC25YHRT3F;

NO'1:With Zhaga Book3 Holders;
NOTE Connectivity:Z50 2213258-2;
NO'2:BJB holder:47.359.1001.50;



eLED

eLED-SAM-7050 Samsung Modular Passive Star LED Heat Sink Φ 70mm

Mounting Options and Drawings & Dimensions

Example:eLED-SAM-7050-B-1

Example:eLED-SAM-70 **1** - **2** - **3**

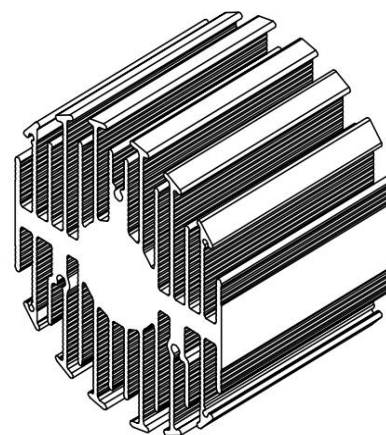
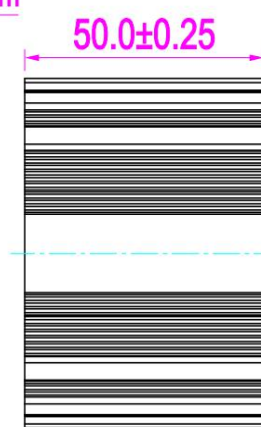
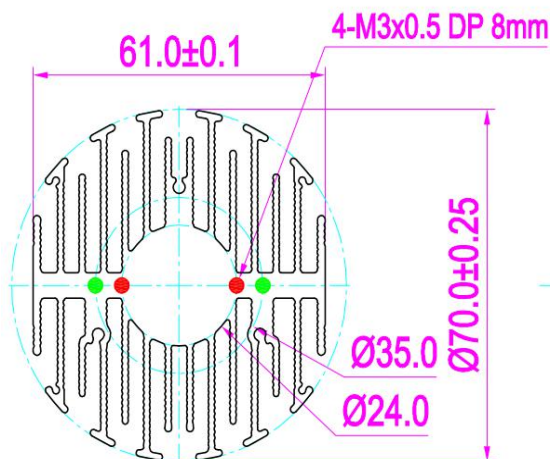
- 1** Height (mm)
- 2** Anodising Color
B-Black
C-Clear
Z-Custom
- 3** Mounting options;
On request;
Mounting holes, cable holes;
Screw thread, thermal interface pad.

Notes:

- *Mentioned models are an extraction of full product range.
- * For specific mechanical adaptations please contact MingfaTech.
- *MingfaTech reserves the right to change products or specifications without prior notice.



MOUNTING OPTION	Module type	Holder NO.	THREAD	THREAD DEPTH	THREAD HOLE DISTANCE
1	LC019	/	M3	6.5mm	24.0mm/ @2-180°
2	LC026	Type 2-2154857-3	M3	6.5mm	35.0mm/ @2-180°



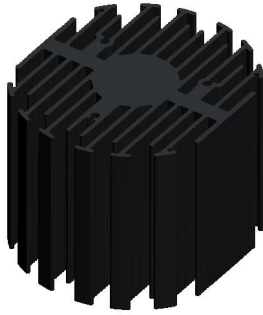
Tel: +86-769-39023131
 E-fax: +86-(020)28819702 ext:22122
 Email:sales@mingfatech.com
 Http://www.heatsinkled.com
 Http://www.mingfatech.com



eLED

eLED-SAM-7050 Samsung Modular Passive Star LED Heat Sink Φ70mm

The thermal data table

	 <i>eLED-7050</i>
Model No.	eLED-SAM-7050
Size	Φ70xH50mm
Material	AL6063-T5
Finish	Black Anodized
Weight(g)	206.0
Thermal Wattage	22.9W
HeatsinkOs-a²	73369
Heat Sink T Rise Above Ambient	2.18

Dissipated Power Pd(W)	Pd = Pe x (1-ηL)	
	Heat sink to ambient thermal resistance Rhs-amb (°C/W)	Heat sink to ambient temperature rise T _{hs-amb} (°C)
	eLED-SAM-7050	
5	3.40	17
10	2.80	28
15	2.70	37
20	2.25	45
25	2.16	54

