



for

LED

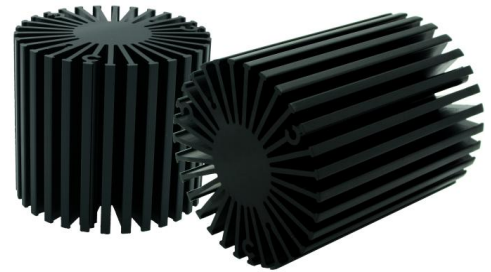


SimpOLED

SimpOLED-SAM-5850 for Samsung Modular Passive LED Cooler Φ 58mm

Features VS Benefits

- * The SimpOLED-SAM-5850 Samsung Modular Passive LED Coolers are specifically designed for luminaires using the Samsung LED engines.
- * Mechanical compatibility with direct mounting of the LED engines to the LED cooler and thermal performance matching the lumen packages.
- * For spotlight and downlight designs from 400 to 1500 lumen.
- * Thermal resistance range Rth 3.7°C/W.
- * Modular design with mounting holes foreseen for direct mounting of Samsung COB LED engines.
- * Diameter 58mm - standard height 50mm Other heights on request.
- * Extruded from highly conductive aluminum.



Samsung LED engine and radiator assembly directly Mounting Options

- * Below you find an overview of Samsung COB's and LED modules which standard fit on the SimpOLED coolers.
- * In this way mechanical after work and related costs can be avoided, and lighting designers can standardize their designs on a limited number of LED coolers.



Samsung LED Modules Mounting indicator marks overview

For the LC013 COB LED engines.

- SPHWW1HDNA27YHW31F;
- SPHWW1HDNA27YHV31F;
- SPHWW1HDNA27YHU31F;
- SPHWW1HDNA27YHT31F;
- SPHWW1HDNA25YHW31F;
- SPHWW1HDNA25YHV31F;
- SPHWW1HDNA25YHU31F;
- SPHWW1HDNA25YHT31F;
- SPHCW1HDNA25YHRT1F;

Direct mounting with machine screws M3x6mm;
Red indicator marks.



SimpOLED

SimpOLED-SAM-5850 for Samsung Modular Passive LED Cooler Φ58mm

Mounting Options and Drawings & Dimensions

Example: SimpOLED-SAM-5850-B-1

Example: SimpOLED-SAM-58 **1** - **2** - **3**

1 Height (mm)

2 Anodising Color

B-Black

C-Clear

Z-Custom

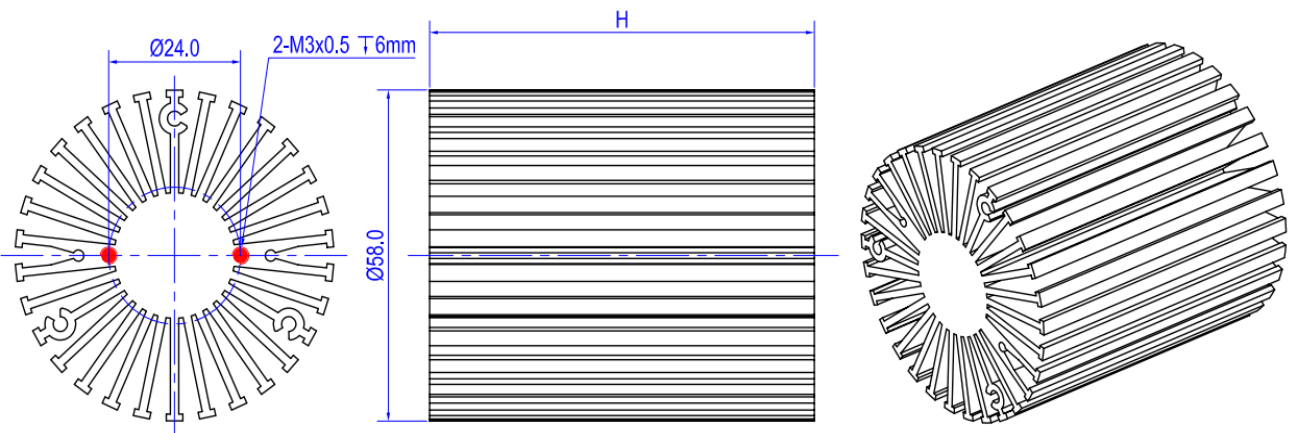
3 Mounting Options - see graphics for details Combinations available

Ex.order code - 12

means option 1 and 2 combined



MOUNTING OPTION	Module type	Holder NO.	THREAD	THREAD DEPTH	THREAD HOLE DISTANCE
1	LC013	/	M3	6mm	24.0mm/ @180°



Notes:

- Mentioned models are an extraction of full product range.
- For specific mechanical adaptations please contact MingfaTech.
- MingfaTech reserves the right to change products or specifications without prior notice.

SimpoleD

SimpoleD-SAM-5850 for Samsung Modular Passive LED Cooler Φ 58mm

The thermal data table

	 <i>SimpoleD-5850</i>
Model No.	SimpoleD-SAM-5850
Size	Φ58xH50mm
Material	AL6063-T5
Finish	Black Anodized
Weight(gr)	174.0
Thermal Wattage	12.2W
Heatsink Θs-a²	65040
Heat Sink T Rise Above Ambient	3.7

Dissipated Power Pd(W)	Pd = Pe x (1- η L)	Heat sink to ambient thermal resistance Rhs-amb (°C/W)	Heat sink to ambient temperature rise Ths-amb (°C)
		SimpoleD-SAM-5850	SimpoleD-SAM-5850
3.0		4.8	14.5
6.0		4.2	25.0
9.0		3.8	34.5
12.0		3.7	43.0
15.0		3.4	51.0
18.0		3.2	58.0

