



LED

Cube

Cube-130 Lighting Kits assembly & introduction

Features & Benefits

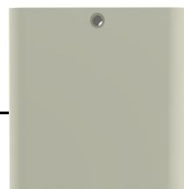
- * Mechanical compatibility with direct mounting of the COB products to the LED thermal body and thermal performance matching the lumen packages.
- * For Down light designs from 2400 to 3500 lumen.
- * Thermal resistance range Rth 1.43°C/W.
- * Full accessory kit with LED cooler Body, PSU mounting shrapnel & lens holder.
- * Other accessories like COB holder & lens separate available.
- * Modular design with mounting holes foreseen for direct mounting of a wide range of LED modules and COB's.
- * Forged from highly conductive aluminum (ADC12) .
- * Dimension 130x130mm - Standard height 130mm , Other heights on request.
- * 3 standard colors - white powder,black powder and gray powder.



Cover



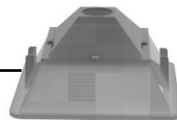
Heatsink



Holder



PC Reflector



- 01) Bridelux: Vero 10/13 Vero SE 10/13 LED engines;
- 02) Cree: XLamp CXA 13xx, Xlamp CXB 15xx, CXA 18xx Series engines;
- 03) Citizen: CLU026,CLU027,CLU028,CLU036,CLU038,CLU721,CLU711, CLU701 LED engines;
- 04) Edison: EdiLex III COB LED engines;
- 05) GE lighting: Infusion™ LED engines;
- 06) LG Innotek: 7W, 10W, 16W, 21W, 32W LED engines;
- 07) Lumileds: LUXEON 1202/1203/1204/1205/1208 LED engines;
- 08) Lumens: Ergon-COB 15xx, 18xx LED engines;
- 09) Luminus: CXM-6, CHM/CLM/CXM-9/14/18 LED engines;
- 10) Nichia: NVxxx024Z,NVxxx036Z, NFCWxxxB Series LED engines;
- 11) Osram: SOLERIQ® S 9/S13, Z6 Mini LED engines;
- 12) Philips: Fortimo SLM LED engines;
- 13) Prolight Opto: PACJ-7xxx/14xxx/21xxx/28xxx-xxxx, PACK-35xxx/42xxx/57xxx-xxxx engines;
- 14) Samsung: LCxxxC Series, LCxxxD Series LED engines;
- 15) Seoul Semiconductor:SAWxxxxxx Series, DC COB LED engines;
- 16) Tridonic: SLE G5, SLE G6 10/15/17mm LED engines;
- 17) Vossloh-Schwabe: LUGA Shop and LUGA C LED engines;

Order Information

Example: Cube-130-WH

Cube - **1** - **2**

1 Product model
- 130


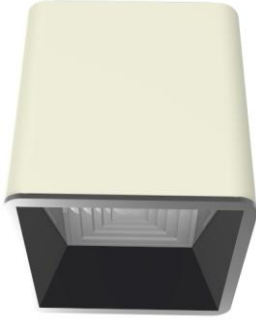
2 Finish
- WH White
- BK Black
- GY Gray

Notes:

- Mentioned models are an extraction of full product range.
- For specific mechanical adaptations please contact MingfaTech.
- MingfaTech reserves the right to change products or specifications without prior notice.



The product data table

	 <i>Cube</i>
Model No.	Cube-130
Heatsink Size	130x130x130mm
Heatsink Material	ADC12
Heatsink Finish	White/Black/Gray
Weight	913g
Dissipated power (Ths-amb,50°C)	30 (W)
Beam Angle	50°
Thermal Resistance (Rhs-amb)	1.43(°C/W)

* 3D files are available in ParaSolid, STP and IGS on request

* The thermal resistance Rth is determined with a calibrated heat source of 16mmx16mm central placed on the heat sink, Tamb 40° and an open environment. Reference data @ heat sink to ambient temperature rise Ths-amb 50°C

The thermal resistance of a LED cooler is not a fix value and will vary with the applied dissipated power Pd

* Dissipated power Pd. Reference data @ heat sink to ambient temperature rise Ths-amb 50°C

The maximal dissipated power needs to be verified in function of required case temperature Tc or junction temperature Tj and related to the estimated ambient temperature where the light fixture will be placed Please be aware the dissipated power Pd is not the same as the electrical power Pe of a LED module

To calculate the dissipated power please use the following formula: $Pd = Pe \times (1-\eta L)$

Pd - Dissipated power

Pe - Electrical power

ηL = Light efficiency of the LED module