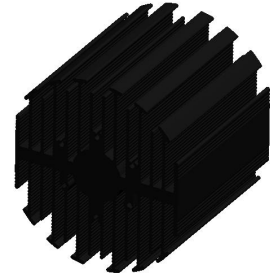


eLED

eLED-SAM-9580 Samsung Modular Passive Star LED Heat Sink Ø95mm

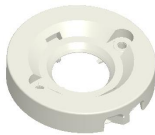
Features VS Benefits

- * The eLED-SAM-9580 Samsung Modular Passive LED Star Heat Sinks are specifically designed for luminaires using the Samsung LED engines.
- * Mechanical compatibility with direct mounting of the LED engines to the LED cooler and thermal performance matching the lumen packages.
- * For spotlight and downlight designs from 2100 to 5500 lumen.
- * Thermal resistance range Rth 1.1°C/W.
- * Modular design with mounting holes foreseen for direct mounting of Samsung COB LED engines.
- * Diameter 95mm - standard height 80mm Other heights on request.
- * Extruded from highly conductive aluminum.



Zhaga LED engine and radiator assembly is a unified future international standardization

- * Below you find an overview of Samsung COB's and LED modules which standard fit on the Star LED Heat Sinks.
- * In this way mechanical after work and related costs can be avoided, and lighting designers can standardize their designs on a limited number of Star LED Heat Sinks.



Samsung LED Modules Mounting indicator marks overview

For the LC026 B LED engines.

- SPHWW 1HDNC27YHW 32F;
- SPHWW 1HDNC27YHV 32F;
- SPHWW 1HDNC27YHU 32F;
- SPHWW 1HDNC27YHT 32F;
- SPHWW 1HDNC25YHW 32F;
- SPHWW 1HDNC25YHV 32F;
- SPHWW 1HDNC25YHU 32F;
- SPHWW 1HDNC25YHT 32F;
- SPHCW 1HDNC25YHRT 3F;

For the LC033 B LED engines.

- SPHWW 1HDND25YHW 33P;
- SPHWW 1HDND25YHV 33P;
- SPHWW 1HDND25YHU 33P;
- SPHWW 1HDND25YHT 33P;
- SPHCW 1HDND25YHRT 3P;

For the LC040 B LED engines.

- SPHWW 1HDNE25YHW 34J;
- SPHWW 1HDNE25YHV 34J;
- SPHWW 1HDNE25YHU 34J;
- SPHWW 1HDNE25YHT 34J;
- SPHCW 1HDNE25YHRT 4J;

NO 1: With Zhaga Book3 Holders:

TE Connectivity: Z50 2213258-2;

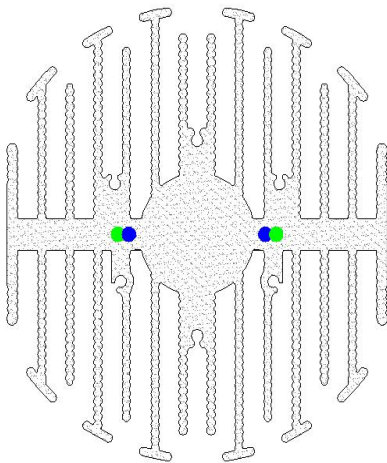
Green indicator marks

Mounting with machine screws M3x8mm;

NO 2: Without holder:

Direct mounting with machine screws M3x8mm;

Blue indicator marks.





for

LED



eLED

eLED-SAM-9580 Samsung Modular Passive Star LED Heat Sink $\Phi 95\text{mm}$

Mounting Options and Drawings & Dimensions

Example: eLED-SAM-9580-B-3

Example: eLED-SAM-95



1 Height (mm)

2 Anodising Color

B-Black

C-Clear

Z-Custom

3 Mounting options;

On request;

Mounting holes, cable holes;

Screw thread, thermal interface pad.

Notes:

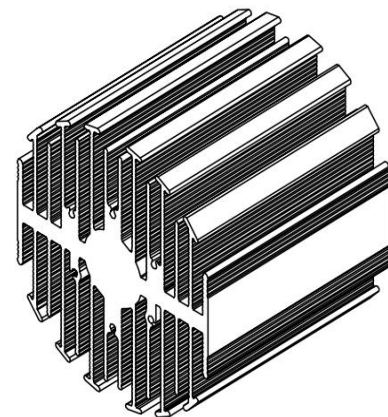
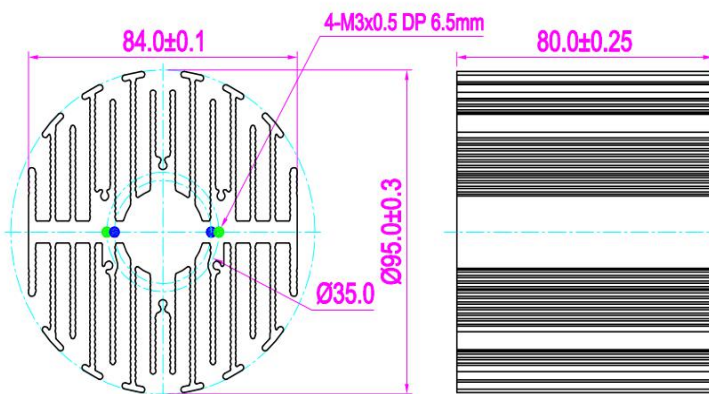
- Mentioned models are an extraction of full product range.

- For specific mechanical adaptations please contact MingfaTech.

- MingfaTech reserves the right to change products or specifications without prior notice.



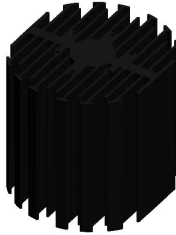
MOUNTING OPTION	Module type	Holder NO.	THREAD	THREAD DEPTH	THREAD HOLE DISTANCE
1	LC026B LC033B	/	M3	6.5mm	30.2mm/ @2-180°
2	LC040B	Type 2-2154857-3	M3	6.5mm	35.0mm/ @2-180°



eLED

eLED-SAM-9580 Samsung Modular Passive Star LED Heat Sink $\Phi 95$ mm

The thermal data table

	 <i>eLED-9580</i>
Model No.	eLED-SAM-9580
Size	$\Phi 95 \times H 80$mm
Material	AL6063-T5
Finish	Black Anodized
Weight(gr)	564.0
Thermal Wattage	49.2W
Heatsink Θ_{s-a}^2	170178
Heat Sink T Rise Above Ambient	1.10

Dissipated Power Pd(W)	Pd = Pe x (1-ηL)	Heat sink to ambient thermal resistance Rhs-amb (°C/W)	Heat sink to ambient temperature rise Ths-amb (°C)
		eLED-SAM-9580	
10		1.6	16
20		1.3	26
30		1.2	35
40		1.1	44
50		1.0	52

