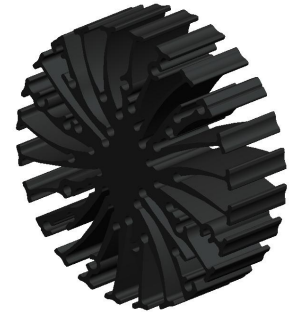


EtraLED

EtraLED-7020 Modular Passive LED Star Heat Sink Φ 70mm

Features VS Benefits

- * Mechanical compatibility with direct mounting of the LED modules to the LED cooler and thermal performance matching the lumen packages.
- * Thermal resistance range Rth 3.57°C/W.
- * Modular design with mounting holes foreseen for direct mounting of a wide range of LED modules and COB's:
 - * Diameter 70mm - Standard height 20mm , Other heights on request.
 - * Extruded from highly conductive aluminum.



-
- 1) Xicato XSM, XIM,XTM;
 - 2) Bridgelux ESS, ESR, Vero 10, Vero 13,Vero 18 V-series;
 - 3) Citizen CLL022-CLU024, CLL032-CLU034;
 - 4) Cree XLamp CXA13xx, CXA15xx,CXA18;
 - 5) Lumileds Luxeon COB's 1203, 1204, 1205, Luxeon K arrays K12, K16;
 - 6) Osram PrevaLED Core,SOLERIQ P and SOLERIQ S LED engines.
 - 7) Seoul Semiconductor ZC6, ZC12, ZC18,ZC25;
 - 8) Tridonic TALEXXmodule SLE modules;
 - 9) LG Innotek LEMWM18 10W, 13W, 17W;
 - 10) Edison EdiLex SLM and EdiLex II COB LED engines;
 - 11) Lustrous LUSTRON 6 series LL604F, LL608D, LL613F, LL620F
 - 12) Prolight Opto PABS, PABA, PACB, PANA
 - 13) SHARP Mini Zenigata Intermod and Mega Zenigata LED engines.
 - 14) Samsung LC013,LC019,LC026,LC033 COB LED engines.
 - 15) Philips Fortimo SLM LED engines.
 - 16) Vossloh-Schwabe LUGA Shop and LUGA C LED engines.
 - 17) Luminus C##-9, C##14 COB LED engines.
-

Order Information

Example:EtaLED-7020-B-#

Example:EtaLED-70 1 - 2 - 3

1 Hight (mm)

2 Anodising Color

B-Black

C-Clear

Z-Custom

3 Mounting Options - see graphics for details Combinations available

Ex.order code - 12

means option 1 and 2 combined


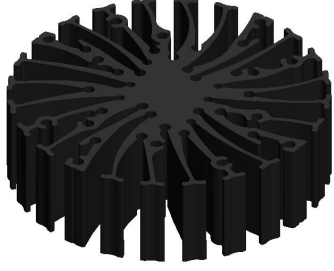
MingFa recommends the use of a high thermal conductive interface between the LED module and the LED cooler. Either thermal grease, a thermal pad or a phase change thermal pad thickness 0.1-0.15mm is recommended.



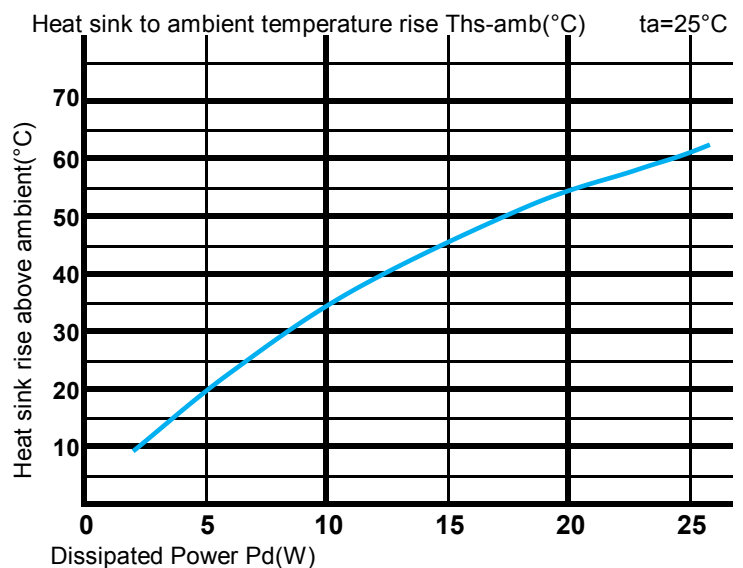
EtraLED

EtraLED-7020 Modular Passive LED Star Heat Sink Φ 70mm

The thermal data table

| | |
|--|--|
|  |  |
| <i>EtraLED-7020</i> | |
| Model No. | EtaLED-7020 |
| Size | Φ70xH20mm |
| Material | AL6063-T5 |
| Finish | Black Anodized |
| Weight(gr) | 77.0 |
| Thermal Wattage | 14.0W |
| HeatsinkΘs-a² | 33348 |
| Heat Sink Rise$T_{\text{rise Above Ambient}}$ ($^{\circ}$C/W) | 3.57 |

| | Pd = Pe x (1- η L) | Heat sink to ambient thermal resistance Rhs-amb ($^{\circ}$ C/W) | Heat sink to ambient temperature rise Ths-amb ($^{\circ}$ C) |
|------------------------|-------------------------|---|---|
| | | EtraLED-7020 | EtraLED-7020 |
| Dissipated Power Pd(W) | 5 | 4.0 | 20 |
| | 10 | 3.5 | 35 |
| | 15 | 3.1 | 46 |
| | 20 | 2.7 | 54 |
| | 25 | 2.5 | 62 |



Notes:

- Mentioned models are an extraction of full product range.
- For specific mechanical adaptations please contact MingfaTech.
- MingfaTech reserves the right to change products or specifications without prior notice.