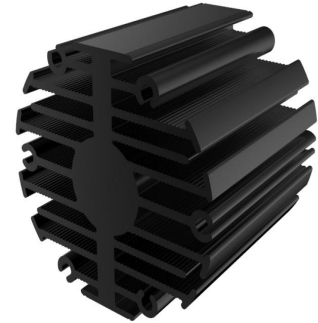


eLED

eLED-4630 Modular Passive LED Star Heat Sink  $\Phi$ 46mm

Features VS Benefits

- \* Mechanical compatibility with direct mounting of the LED modules to the LED cooler and thermal performance matching the lumen packages.
  - \* Thermal resistance range Rth 5.56°C/W.
  - \* Modular design with mounting holes foreseen for direct mounting of a wide range of LED modules and COB's.
  - \* Diameter 46.5mm - Standard height 30mm , Other heights on request.
  - \* Extruded from highly conductive aluminum.
- 2 standard colors - clear anodised - black anodised.
- Zhaga Book 3 Spot Light Modules Edison , Osram , Xicato ,Bridgelux ,Citizen ,Cree , Lumileds , Tridonic , Vossloh , Seoul ,LG , Lustrous ,Prolight ,Vossloh ,Samung ,Sharp ,Philips.



- 1) Xicato XSM, XIM,XTM;
- 2) Bridgelux ESS, ESR, Vero 10, Vero 13, V-series;
- 3) Citizen CLL022-CLU024, CLL032-CLU034;
- 4) Cree XLamp CXA13xx, CXA15xx;
- 5) Lumileds Luxeon COB's 1203, 1204, 1205,Luxeon K arrays K12, K16;
- 6) Osram Soleriq S13, S19, E30
- 7) Seoul Semiconductor ZC6, ZC12;
- 8) Tridonic TALEXXmodule SLE modules.
- 9) LG Innotek LEMW M18 10W, 13W;
- 10) Edison EdiLex SLM and EdiLex II COB LED engines.
- 11) Lustrous Lustrous Series,Lustrous M Series,Lustrous V5 Series
- 12) Prolight Opto PABS, PABA, PACB, PANA
- 13) Luminus CLM-9,CXM-9,CHM-9 COB engines.
- 14) Vossloh-Schwabe LUGA Shop and LUGA C LED engines.
- 15) Samung LC013 COB LED engines.
- 16) SHARP Mini Zenigata LED engines.
- 17) Philips Fortimo SLM LED engines.



Order Information

Example:eLED-4630-B-#

Example:eLED-46 **1** - **2** - **3**

**1** Hight (mm)

**2** Anodising Color

B-Black

C-Clear

Z-Custom

**3** Mounting Options - see graphics for details Combinations available

Ex.order code - 12

means option 1 and 2 combined

MingFa recommends the use of a high Thermal conductive interface between the LED Module and the LED cooler. Either thermal grease, A thermal pad or a phase change thermal pad Thickness 0.1-0.15mm is recommended.

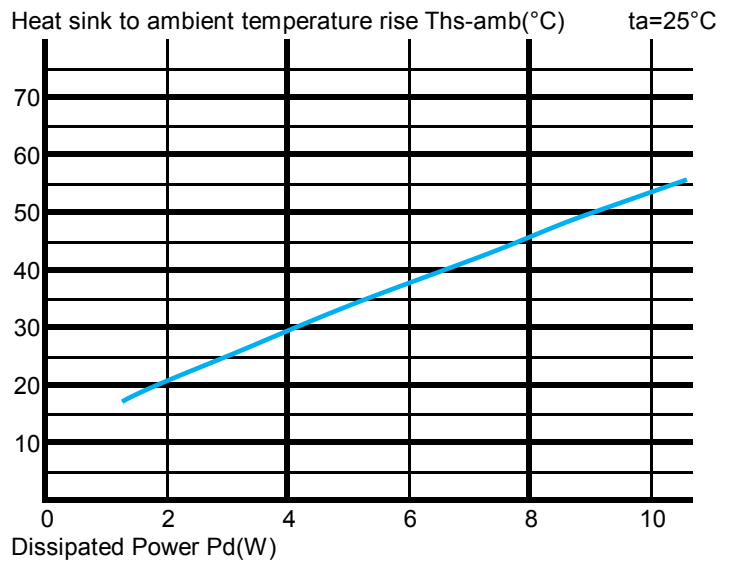
*eLED*

**eLED-4630 Modular Passive LED Star Heat Sink  $\Phi$ 46mm**

**The thermal data table**

	 <i>eLED-4630</i>
<b>Model No.</b>	<b>eLED-4630</b>
<b>Size</b>	<b><math>\Phi</math>46.5xH30mm</b>
<b>Material</b>	<b>AL6063-T5</b>
<b>Finish</b>	<b>Black Anodized</b>
<b>Weight(g)</b>	<b>62.0</b>
<b>Thermal Wattage</b>	<b>9.0 W</b>
<b>HeatsinkOs-a<sup>2</sup></b>	<b>25366</b>
<b>Heat Sink T<sub>Rise Above Ambient</sub> (°C/W)</b>	<b>5.56</b>

Dissipated Power Pd(W)	Pd = Pe x (1-ηL)	Heat sink to ambient thermal resistance Rhs-amb (°C/W)	Heat sink to ambient temperature rise T <sub>hs-amb</sub> (°C)
		eLED-4630	
2		10.5	21
4		7.5	30
6		6.3	38
8		5.8	46
10		5.4	54



**Notes:**

- Mentioned models are an extraction of full product range.
- For specific mechanical adaptations please contact MingfaTech.
- MingfaTech reserves the right to change products or specifications without prior notice.