



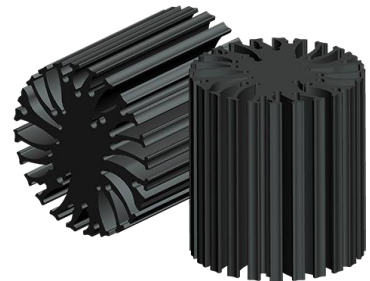
Mingfa TECH for LED

EtraLED

XSA-380 Modular Passive LED Cooler Φ 48mm for Xicato

Features VS Benefits

- * The XSA-380 Star Heat Sinks are specifically designed for luminaires using the Xicato LED Modules.
- * Mechanical compatibility with direct mounting of the LED modules to the LED cooler and thermal performance matching the lumen packages.
- * Thermal resistance range R_{th} 4.2°C/W.
- * Xicato Thermal Class E , (60° tilt angle, 40°C ambient) .
- * The cooler design with mounting holes foreseen for direct mounting of Xicato XSM, XIM and XTM Modules .
- * Diameter 48mm - Standard height 50mm , Other heights on request.
- * Extruded from highly conductive aluminum.



*The XSA-380 Xicato Star Heat Sink is standard foreseen from a variety of mounting holes which allow direct mounting of all Xicato Spot and down light LED modules and secondary optics on the LED heat sink.

*In this way mechanical afterwork and related costs can be avoided, and lighting designers can standardize their designs on a limited number of LED coolers.

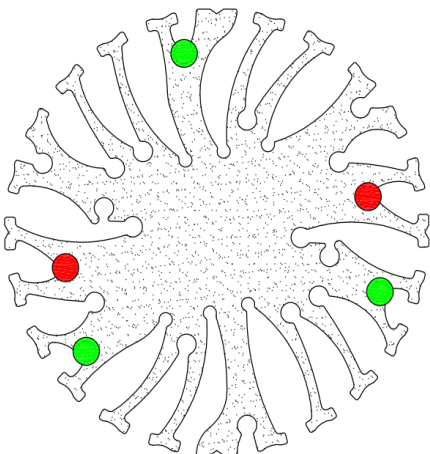
*Below you find an overview of Xicato LED modules which standard fit on the XSA-380 Star Heat Sinks.

*MingFa performs thermal validation tests on each of the LED modules mounted on the LED cooler and publishes.

*This data in the Xicato Cooler thermal validation reports.

*For a full overview of available LED coolers for Xicato LEDs, please refer to the Xicato LED cooler overview on.

XICATO



XSA-380 standard height 50mm for Xicato LED modules Mounting Options

Xicato XSM LED modules name :

XSM8027-xxxx ;	XSM9530-xxxx ;
XSM8030-xxxx ;	XSM9540-xxxx ;
XSM8040-xxxx ;	XSMV830-xxxx ;
XSM9527-xxxx ;	

Direct mounting with 3 screws M3 x 12mm;
Green indicator marks.

Xicato XIM LED modules name :

XIM198027-xxx ;	XIM198040-xxx ;
XIM198030-xxx ;	XIM19V830-xxx ;
XIM198035-xxx ;	

Direct mounting with 3 screws M3 x 20mm;
Green indicator marks.

Xicato XTM LED modules:

XTM19-8027-xxx ;	XTM19-8040-xxx ;
XTM19-8030-xxx ;	XTM19-V830-xxx ;
XTM19-8035-xxx ;	

Direct mounting with 3 screws M3 x 10mm;
Green indicator marks.

Direct mounting by Zhaga mounting holes with 2 screws M3 x 10mm;
Red indicator marks.



for

LED



EtraLED

XSA-380 Modular Passive LED Cooler Φ 48mm for Xicato

Mounting Options and Drawings & Dimensions

Example: XSA-380-M3-B-2

Example: XSA-380-M3 - **1** - **2**

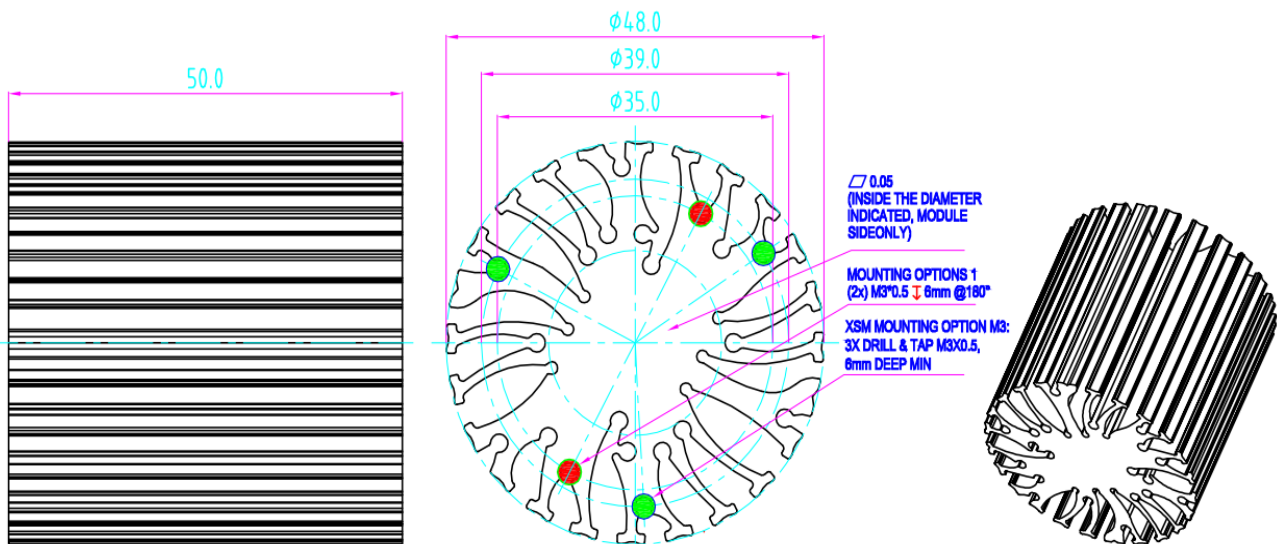
- 1** Anodising Color
 - B-Black
 - C-Clear
 - Z-Custom

- 2** Mounting Options - see graphics for details Combinations available
 - Ex.order code - 12
 - means option 1 and 2 combined

XICATO

MOUNTING OPTION	PART NUMBER	THREAD	THREAD DEPTH
NONE	XSA-380-M3-B-N	NONE	NONE
1	XSA-380-M3-B-1	M3*0.5	6mm

MingFa recommends the use of a high Thermal conductive interface between the LED Module and the LED cooler. Either thermal grease, A thermal pad or a phase change thermal pad Thickness 0.1-0.15mm is recommended.



Notes:

- Mentioned models are an extraction of full product range.
- For specific mechanical adaptations please contact MingfaTech.
- MingfaTech reserves the right to change products or specifications without prior notice.



EtraLED

XSA-380 Modular Passive LED Cooler Φ 48mm for Xicato

The thermal data table

	
Model No.	XSA-380
Size	Φ48xH50mm
Material	AL6030-T5
Finish	Black Anodized
Weight(g)	134
Thermal Wattage	12W
Heatsink Θ_{s-a}^2	36868
Thermal Resistance ($^{\circ}\text{C}/\text{W}$)²	4.2

	Pd = Pe x (1- η L)	Heat sink to ambient thermal resistance Rhs-amb ($^{\circ}\text{C}/\text{W}$)	Heat sink to ambient temperature rise Ths-amb ($^{\circ}\text{C}$)
		XSA-380	XSA-380
Dissipated Power Pd(W)	2.5W	5.6	14
	4.5W	5.3	24
	7.0W	4.6	32
	9.5W	4.3	41
	12W	4.1	49
	18W	3.7	65

