



for

LED



SimpoleD

SimpoleD-SEO-11750 for Seoul Modular Passive LED Cooler Φ 117mm

Features VS Benefits

- * The SimpoleD-SEO-11750 Seoul Modular Passive LED Coolers are specifically designed for luminaires using the Seoul LED engines.
- * Mechanical compatibility with direct mounting of the LED engines to the LED cooler and thermal performance matching the lumen packages.
- * For spotlight and downlight designs from 2000 to 6500 lumen.
- * Thermal resistance range Rth 1.0°C/W.
- * Modular design with mounting holes foreseen for direct mounting of Seoul ZC4 Series,ZC6 Series,ZC12 Series,ZC18 Series,ZC25 Series, ZC40 Series and ZC60 Series COB engines.
- * Diameter 117mm - standard height 50mm Other heights on request.
- * Extruded from highly conductive aluminum.

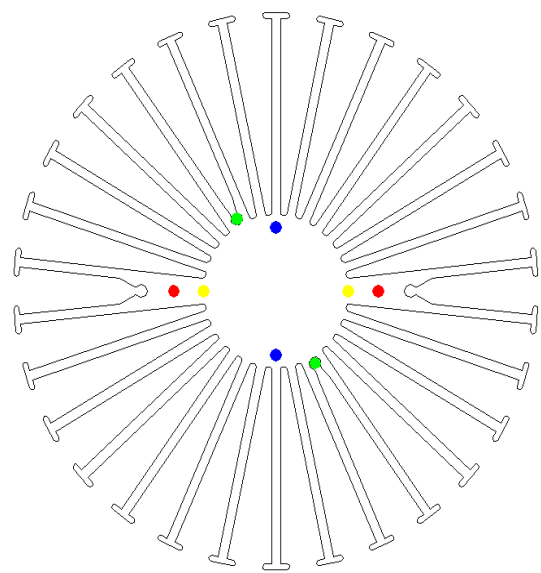


Seoul LED engine and radiator assembly directly Mounting Options

- * Below you find an overview of Seoul COB's and LED modules which standard fit on the SimpoleD coolers.
- * In this way mechanical after work and related costs can be avoided, and lighting designers can standardize their designs on a limited number of LED coolers.



SEOUL SEMICONDUCTOR



Seoul COB engines Mounting Options

ZC 12 Series COB Modules:

- SDW02F1C; SDW82F1C; SDW92F1C;

ZC 18 Series COB Modules:

- SDW03F1C; SDW83F1C; SDW93F1C;

Zhaga Book3 Holes ,
BJB Semiconductor Spotlight connector 47.319.2021.50

TE Connectivity Lumawise type Z502213254-1
TE Connectivity Lumawise type Z502213254-2

Green indicator marks;
Mounting with 2 screws M3x8mm.

Blue indicator marks;
Direct mounting with 2 screws M3x6mm.

ZC 25 Series LED Modules name:

- SDW04F1C;
SDW84F1C;
SDW94F1C;

ZC 40 Series LED Modules name:

- SDW05F1C;
SDW85F1C;
SDW95F1C;

ZC 60 Series LED Modules name:

- SDW06F1C;
SDW86F1C;

Green indicator marks:
Zhaga Book3 BJB Holder:47.319.2030.50
Mounting with machine screws M3x8mm ;
Yellow indicator marks ;
Direct mounting with 2 screws M3x6mm.

ZC 100 Series LED Modules name:

- SDW07F1C; SDW87F1C;

Red indicator marks ;
Direct mounting machine screws M3x6mm ;

Tel: +86-769-39023131
 E-fax: +86-(020)28819702 ext:22122
 Email:sales@mingfatech.com
 Http://www.heatsinkled.com
 Http://www.mingfatech.com



SimpoleD

SimpoleD-SEO-11750 for Seoul Modular Passive LED Cooler $\Phi 117\text{mm}$

Mounting Options and Drawings & Dimensions

Example: SimpoleD-SEO-11750-B-3

Example: SimpoleD-SEO-117 **1** - **2** - **3**

1 Height (mm)

2 Anodising Color

B-Black

C-Clear

Z-Custom

3 Mounting Options - see graphics for details Combinations available

Ex.order code - 12

means option 1 and 2 combined

Notes:

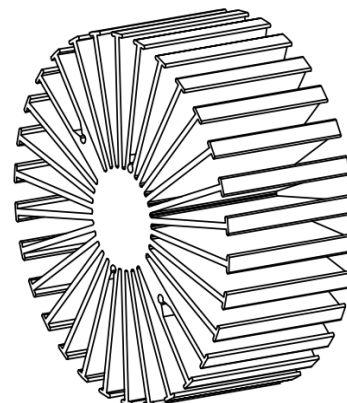
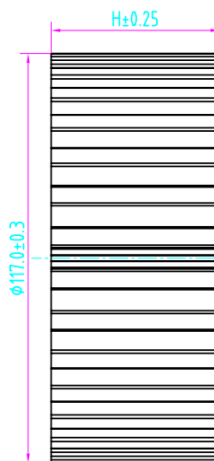
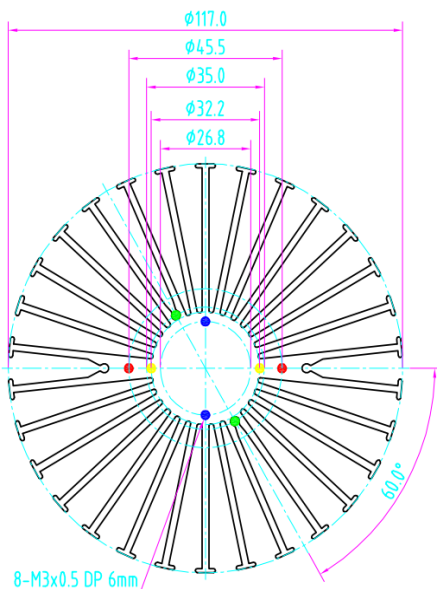
- Mentioned models are an extraction of full product range.
- For specific mechanical adaptations please contact MingfaTech.
- MingfaTech reserves the right to change products or specifications without prior notice.



SEOUL SEMICONDUCTOR



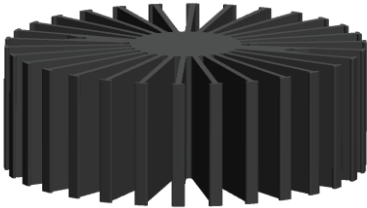
MOUNTING OPTION	Module type	Holder NO.	THREAD	THREAD DEPTH	THREAD HOLE DISTANCE
1	ZC12 Series ZC18 Series	/	M3	6mm	26.8mm/ 2-@180°
2	ZC25 Series ZC40 Series ZC60 Series	/	M3	6mm	32.2mm/ 2-@180°
3	ZC12 Series ZC18 Series	BJB:47.319.2040.50	M3	6mm	35mm/ 2-@180° Zhaga Book3
	ZC25 Series ZC40 Series ZC60 Series	BJB: 47.319.2030.50	M3	6mm	
4	ZC100 Series	/	M3	6mm	45.5mm/ 2-@180°



SimpoleD

SimpoleD-SEO-11750 for Seoul Modular Passive LED Cooler Φ 117mm

The thermal data table

	 SimpoleD-11750
Model No.	SimpoleD-SEO-11750
Size	Φ117xH50mm
Material	AL6063-T5
Finish	Black Anodized
Weight(g)	484.0
Thermal Wattage	49.2W
HeatsinkOs-a²	147370
Heat Sink T Rise Above Ambient	11.0

	Pd = Pe x (1-ηL)	Heat sink to ambient thermal resistance Rhs-amb (°C/W)	Heat sink to ambient temperature rise Ths-amb (°C)
		SimpoleD-SEO-11750	SimpoleD-SEO-11750
Dissipated Power Pd(W)	8.0	1.35	10.8
	16.0	1.30	20.8
	24.0	1.25	30.0
	32.0	1.15	36.8
	40.0	1.10	44.0
	48.0	0.97	46.6
	56.0	0.88	49.3

Heat sink to ambient temperature rise Ths-amb(°C) ta=25°C

