

|                    |             |                    |
|--------------------|-------------|--------------------|
| 材料<br>Material     | 线毯          | 南京美硕建材有限公司         |
| 厚度/厚度<br>Thickness | 刘明辉         | 全国免费热线400-665-1110 |
| 颜色<br>Colour       | 刘云富         | 图样号 L05JT06        |
| 硬度<br>Hardness     |             | 外墙变形缝(金属盖板型)(二)    |
| 长度<br>Length       |             | 页号 33              |
| 重量<br>and weight   |             |                    |
|                    | Picture No. | 46                 |

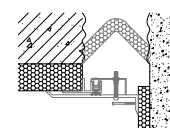
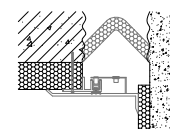
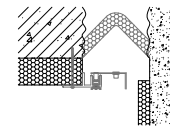
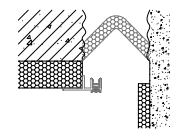
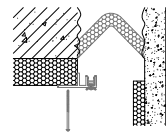
5. Nail the scree to make sure the base is on a straight line. Or when the centering bar bolt is screwed down, the aluminum plate must be mismatched.

6. Install the gasket on the aluminum frame.

7. Install the centering bar and lean it as 45° with the aluminum base. According to the screw hole of the aluminum palte, confirm the location of the centering bar screw. Sign on the decorative level.

8. Place the centering bar as the sign and place the plate. Fix the screw from one side to another side.

9. Tighten the screw arbor on the plate. Installation finish.



1. Clean the garbage and check if the gap is equally wide and straight.

2. If the width of the joint width is not the same, make the chalk line at the widest place and cut the extra parts.

3. Install the water barrier. The side line of water barrier can't cover the ink line snapped. (Brush the special glue on the surface of the screed coat and the lower surface of the water barrier. After the glue is almost air drying, put the water barrier on the screed coat.)

4. Install the aluminum frame and make sure the aluminum frame on the same width and height.

