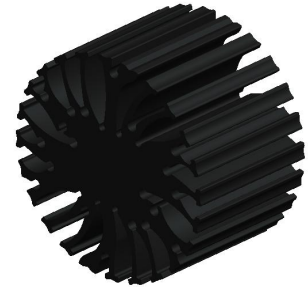


EtraLED

EtraLED-4830 Modular Passive LED Star Heat Sink Φ 48mm

Features VS Benefits

- * Mechanical compatibility with direct mounting of the LED modules to the LED cooler and thermal performance matching the lumen packages.
 - * Thermal resistance range Rth 4.76°C/W.
 - * Modular design with mounting holes foreseen for direct mounting of a wide range of LED modules and COB's:
 - * Diameter 48mm - Standard height 30mm , Other heights on request.
 - * Extruded from highly conductive aluminum.
- Zhaga Book 3 Spot Light Modules Edison , Osram , Xicato , Bridgelux , Citizen , Cree , Lumileds, Tridonic , Vossloh-Schwabe , Seoul , LG , Lustrous , Prolight , Sharp , Samsung , Luminus .Philips



- 1) Xicato XSM, XIM,XTM;
- 2) Bridgelux ESS, ESR, Vero 10, Vero 13, Vero 18 V-series;
- 3) Citizen CLL022-CLU024, CLL032-CLU034;
- 4) Cree XLamp CXA13xx, CXA15xx, CXA18;
- 5) Lumileds Luxeon COB's 1203, 1204, 1205, Luxeon K arrays K12, K16;
- 6) Osram PrevaLED Core, SOLERIQ P and SOLERIQ S LED engines.
- 7) Seoul Semiconductor ZC6, ZC12, ZC18, ZC25;
- 8) Tridonic TALEXX module SLE modules;
- 9) LG Innotek LEMWM18 10W, 13W, 17W;
- 10) Edison EdiLex SLM and EdiLex II COB LED engines;
- 11) Lustrous LUSTRON 6 series LL604F, LL608D, LL613F, LL620F
- 12) Prolight Opto PABS, PABA, PACB, PANA
- 13) SHARP Mini Zenigata Intermo and Mega Zenigata LED engines.
- 14) Samsung LC013, LC019, LC026, LC033 COB LED engines.
- 15) Philips Fortimo SLM LED engines.
- 16) Vossloh-Schwabe LUGA Shop and LUGA C LED engines.
- 17) Luminus C##-9, C##14 COB LED engines.

Order Information

Example: EtraLED-4830-B-#

Example: EtraLED-48 **1** - **2** - **3**

- 1** Hight (mm)
- 2** Anodising Color
 - B-Black
 - C-Clear
 - Z-Custom
- 3** Mounting Options - see graphics for details Combinations available
 - Ex.order code - 12
 - means option 1 and 2 combined

MingFa recommends the use of a high thermal conductive interface between the LED module and the LED cooler. Either thermal grease, a thermal pad or a phase change thermal pad thickness 0.1-0.15mm is recommended.



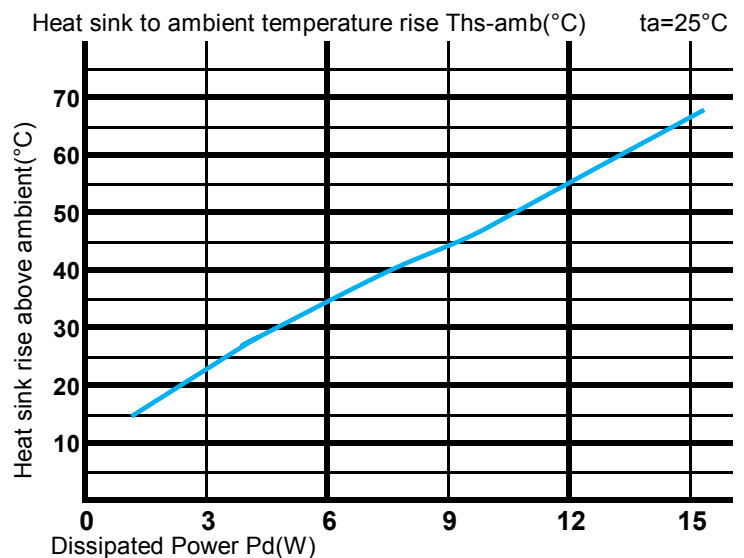
EtraLED

EtraLED-4830 Modular Passive LED Star Heat Sink Φ 48mm

The thermal data table

| | |
|---|--|
|  |  |
| | <i>EtraLED-4830</i> |
| Model No. | EtraLED-4830 |
| Size | Φ48xH30mm |
| Material | AL6063-T5 |
| Finish | Black Anodized |
| Weight(gr) | 80.0 |
| Thermal Wattage | 10.5W |
| HeatsinkΘs-a² | 22911 |
| Heat Sink RiseT_{Rise Above Ambient} (°C/W) | 4.76 |

| Dissipated Power Pd(W) | Pd = Pe x (1-ηL) | Heat sink to ambient thermal resistance Rhs-amb (°C/W) | Heat sink to ambient temperature rise Ths-amb (°C) |
|------------------------|------------------|--|--|
| | | EtraLED-4820 | EtraLED-4820 |
| 3 | | 8.00 | 24 |
| 6 | | 5.67 | 34 |
| 9 | | 5.00 | 45 |
| 12 | | 4.58 | 55 |
| 15 | | 4.40 | 66 |



Notes:

- Mentioned models are an extraction of full product range.
- For specific mechanical adaptations please contact MingfaTech.
- MingfaTech reserves the right to change products or specifications without prior notice.