



for

LED



*EtraLED*

**EtraLED-SHA-9620 Sharp Modular Passive Star LED Heat Sink  $\Phi$ 96mm**

**Features VS Benefits**

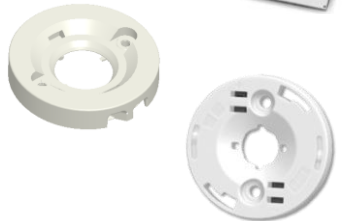
- \* The EtraLED-SHA-9620 SHARP Modular Passive LED Coolers are specifically designed for luminaires using the SHARP LED engines.
- \* Mechanical compatibility with direct mounting of the LED engines to the LED cooler and thermal performance matching the lumen packages.
- \* For spotlight and downlight designs from 1100 to 3400 lumen.
- \* Thermal resistance range Rth 1.8°C/W.
- \* Modular design with mounting holes foreseen for direct mounting of SHARP Mini Zenigata, Tiger Zenigata and Mega Zenigata LED engines.
- \* Diameter 96mm - standard height 20mm Other heights on request.
- \* Extruded from highly conductive aluminum.



**Zhaga LED engine and radiator assembly is a unified future international standardization**

- \* Below you find an overview of SHARP engines COB's and LED modules which standard fit on the EtraLED coolers.
- \* In this way mechanical after work and related costs can be avoided, and lighting designers can standardize their designs on a limited number of LED coolers.

**SHARP**



**Sharp LED Modules Mounting indicator marks overview**

**Mega Zenigata LED modules name:**

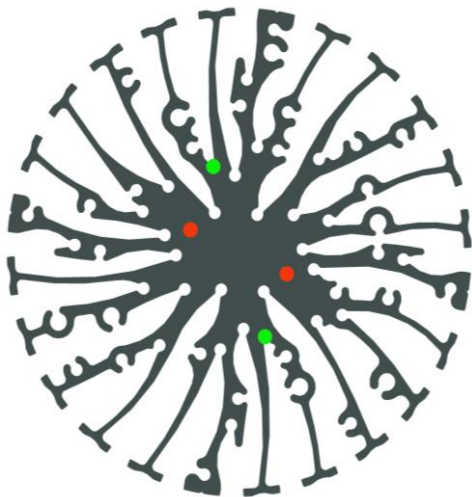
GW6DGA27XFC;	GW6DMC27XFC;
GW6DGA30XFC;	GW6DMC30XFC;
GW6DGA40XFC;	GW6DMC40XFC;
GW6DGA50XFC;	GW6DMC50XFC;
GW6DGC27XFC;	GW6DMA27XFC;
GW6DGC30XFC;	GW6DMA30XFC;
GW6DGC40XFC;	GW6DMA35XFC;
GW6DGC50XFC;	GW6DMA40XFC;
GW6TGCBG40C;	GW6DMA50XFC;

Zhaga Book3 Holders:  
 BJB Spotlight connector: 47.319.2011.50;  
 TE Connectivity: 2213130-2  
 Direct mounting with machine screws M3x6mm;  
 Gree indicator marks

**Mini Mega Zenigata LED modules name:**

GW6BMR27HED;	GW6BGR27HED;
GW6BMR30HED;	GW6BGR30HED;
GW6BMR40HED;	GW6BGR40HED;
GW6BMR50HED;	GW6BGR50HED;
GW6BMS27HED;	GW6BGS27HED;
GW6BMS30HED;	GW6BGS30HED;
GW6BMS40HED;	GW6BGS40HED;
GW6BMS50HED;	GW6BGS50HED;

Zhaga Book11 Holders:  
 BJB Spotlight connector: 47.319.6180.50;  
 Direct mounting with machine screws M3x6mm;  
 Red indicator marks





for

LED



**EtraLED** EtraLED-SHA-9620 Sharp Modular Passive Star LED Heat Sink  $\Phi$ 96mm

**Mounting Options and Drawings & Dimensions**

Example: EtraLED-SHA-9620-B-3

Example: EtraLED-SHA-96 **1** - **2** - **3**

**1** Height (mm)

**2** Anodising Color  
 B-Black  
 C-Clear  
 Z-Custom

**3** Mounting Options - see graphics for details Combinations available  
 Ex.order code - 12  
 means option 1 and 2 combined

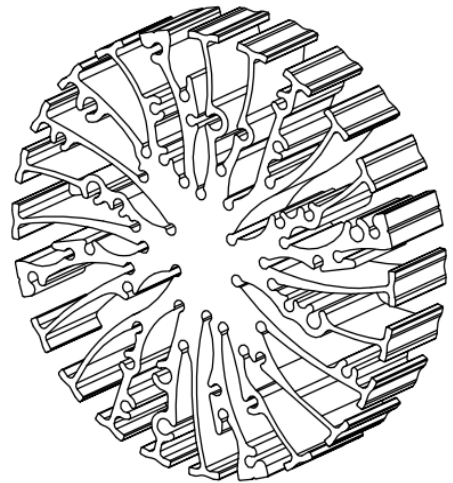
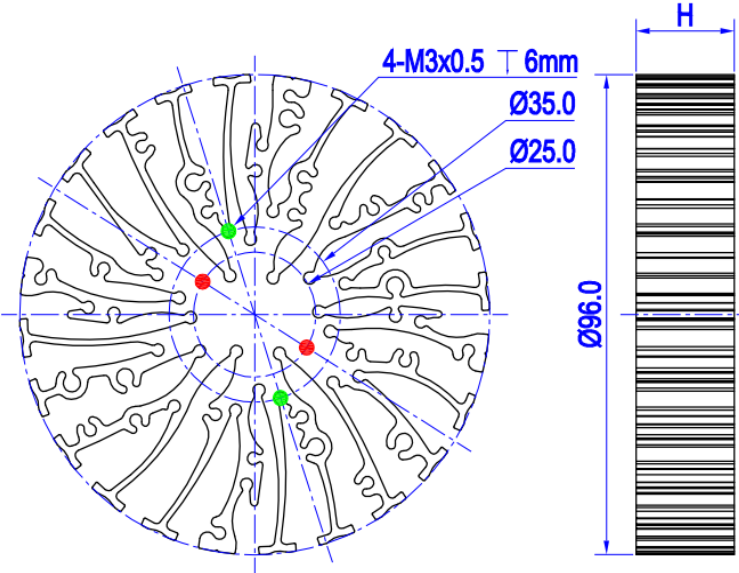
**Notes:**

- Mentioned models are an extraction of full product range.
- For specific mechanical adaptations please contact MingfaTech.
- MingfaTech reserves the right to change products or specifications without prior notice.

**SHARP**



MOUNTING OPTION	Module type	Holder NO.	THREAD	THREAD DEPTH	THREAD HOLE DISTANCE
1	Mini ZENIGATA	BJB:(47.319.6180 .50)	M3	6mm	25.0mm/ @180°
2	Mega ZENIGATA Tiger Zenigataand	BJB:(47.319.2011 .50)	M3	6mm	35.0mm/ @180°
		Type :(2213130-2)			



Tel:+86-769-39023131  
 E-fax:+86-(020)28819702 ext:22122  
 Email:sales@mingfatech.com  
 Http://www.heatsinkled.com  
 Http://www.mingfatech.com



## EtraLED

### EtraLED-SHA-9620 Sharp Modular Passive Star LED Heat Sink $\Phi$ 96mm

#### The thermal data table

	<p><i>EtraLED-9620</i></p>
<b>Model No.</b>	EtraLED-SHA-9620
<b>Size</b>	$\Phi$ 96xH20mm
<b>Material</b>	AL6063-T5
<b>Finish</b>	Black Anodized
<b>Weight(gr)</b>	144.0
<b>Thermal Wattage</b>	28.0W
<b>Heatsink <math>\Theta</math>s-a<sup>2</sup></b>	50647
<b>Heat Sink T Rise Above Ambient</b>	1.80

Dissipated Power Pd(W)	Pd = Pe x (1- $\eta$ L)	Heat sink to ambient thermal resistance Rhs-amb ( $^{\circ}$ C/W)	Heat sink to ambient temperature rise Ths-amb ( $^{\circ}$ C)
		EtraLED-SHA-9620	EtraLED-SHA-9620
6		2	12
12		2.1	25
18		1.9	35
24		1.8	43
30		1.7	51

