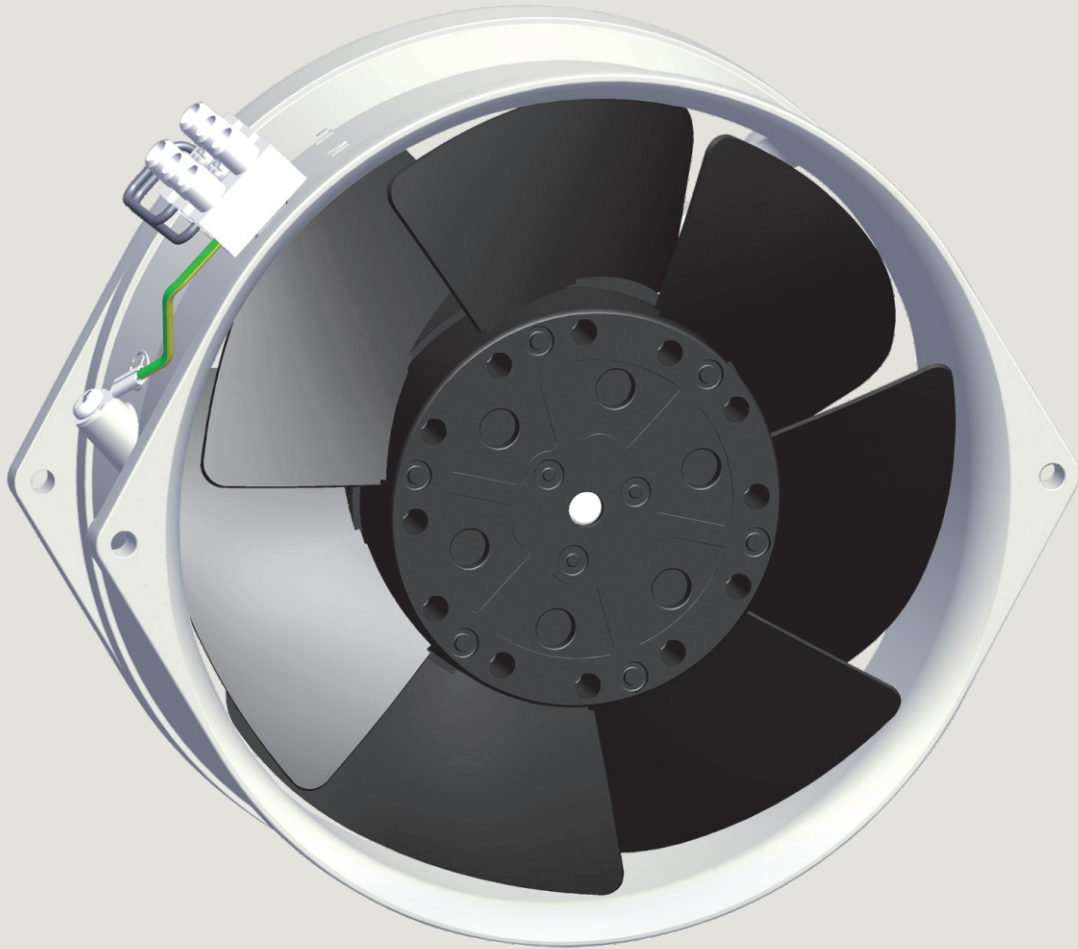


Shaded Pole
External Rotor
Motor Fan **Ø160mm**
罩極外轉子電機風扇



1 Frame

Aluminum die-casting, surface is finished by anti-corrosion treatment with primary color or black electrophoresis anti-corrosion treatment

2 Impeller

Metal impellers are welded to motor rotor, and surface is finished by black electrophoresis anti-corrosion treatment

3 Operation Temperature/Humidity

Temperature -30°C ~ +65°C Humidity 0% ~ 95%

4 Protection

Motor Internal with automatic recovery thermal protector

5 Withstand Voltage

AC 1,800V , 1 min at 0.5mA, 50/60 Hz

6 Insulation System

design according to IEC61858 Grade F,

7 Protection Grade IP44

1 機 架:

鋁合金壓鑄，表面原色抗腐蝕處理或黑色電泳防腐蝕處理

2 風 葉:

金屬葉片焊接在外轉子上，表面黑色電泳防腐蝕處理

3 運行溫/濕度範圍:

溫度 -30°C ~ +65°C 濕度 0% ~ 95% (非凝結狀態)

4 保 護:

電機內部帶自動恢復熱保護器

5 絕緣耐壓:

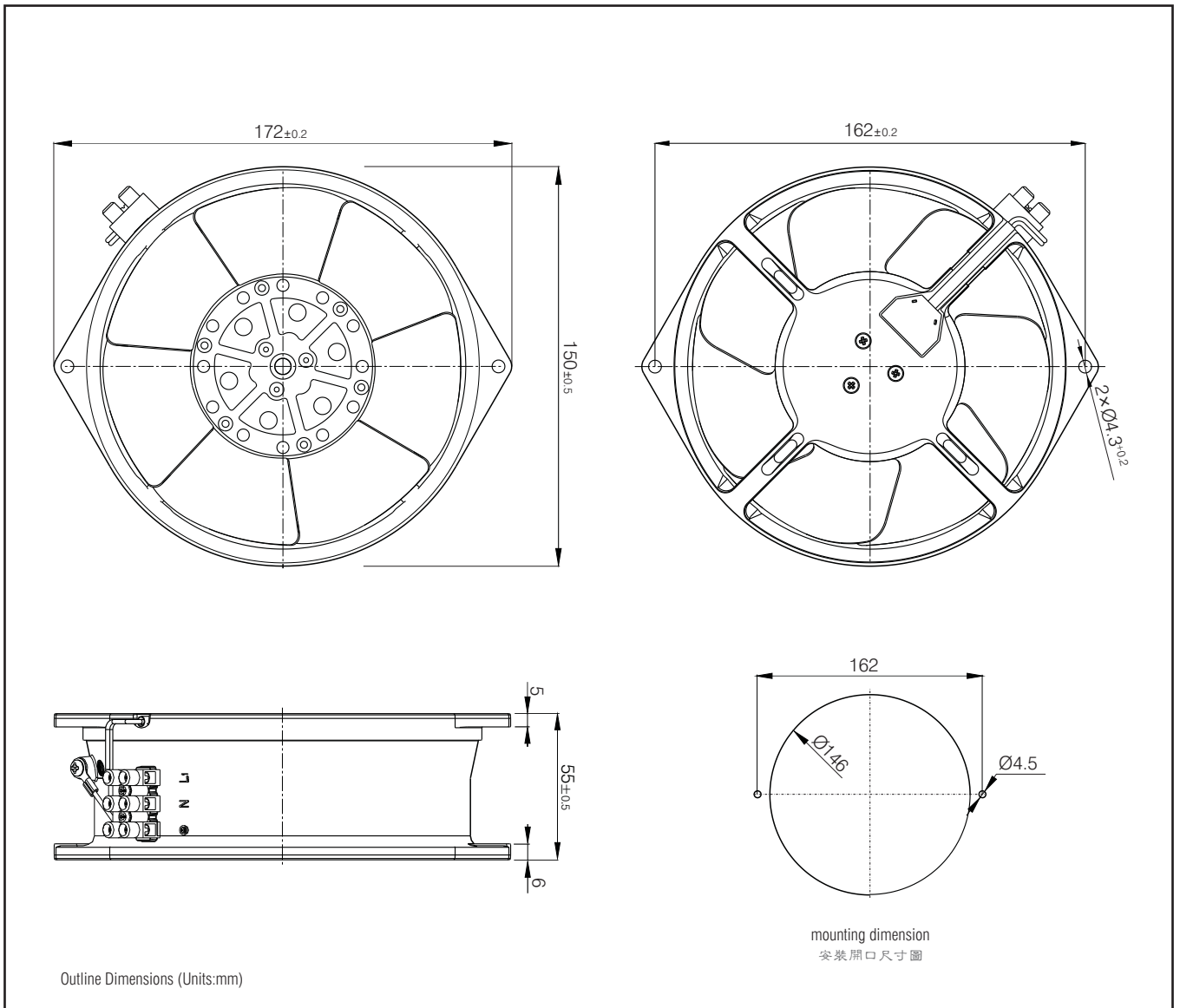
AC 1800V 0.5mA 50/60Hz下耐受1分鐘

6 絕緣系統:

按 IEC61858 F級設計

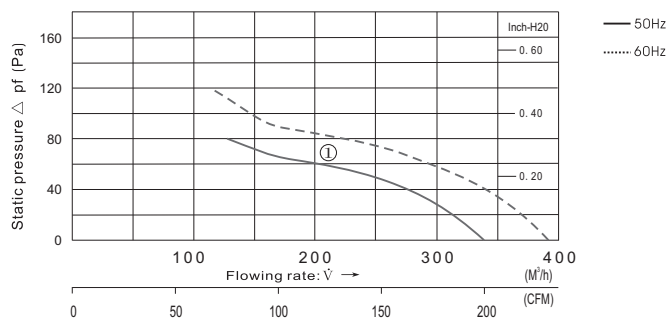
7 電機防護等級:

IP 44



- Ⓐ Rotation direction of blades : CCW seen from the front impellers
- Ⓑ Power Connection: PA-10 terminal connection
- Ⓒ Unit weight: 1.1kg

- Ⓐ 風扇旋向: 從扇葉方向看為逆時針
- Ⓑ 電源連接: PA-10 端子連接
- Ⓒ 單機重量: 1.1kg



Parameters

Type 產品型號	Motor 電機	Rated Voltage 額定電壓 V	Frequency 周波數 Hz	current 電流 (A)	Power 功率 (W) <small>+10% -20%</small>	Speed 回轉速度 (min ⁻¹)	Max Air Flow 最大風量 CFM m ³ /h	Static Pressure 最大靜壓 (Pa)	Noise 噪音 (dB)	Curve 曲綫	Capacitor 電容 (μ F)
FJ16051MABD	M2S7201-AF	115	50	0.52	37	2650	189 320	80	49	①	-----
			60	0.43	34	3000	224 380	120	53		
FJ16052MABD	M2E7201-AF	230	50	0.25	37	2650	189 320	80	49	①	-----
			60	0.20	33	3000	224 380	120	53		
FJ16053MABD	M2D7201-AF	380	50	0.15	39	2650	189 320	80	49	①	-----
			60	0.12	34	3000	224 380	120	53		