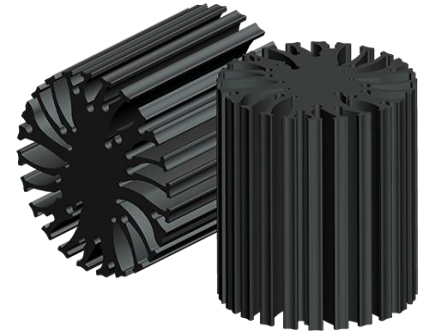


## EtraLED

### EtraLED-4880 Modular Passive LED Star Heat Sink $\Phi$ 48mm

#### Features VS Benefits

- \* Mechanical compatibility with direct mounting of the LED modules to the LED cooler and thermal performance matching the lumen packages.
  - \* Thermal resistance range Rth 3.6°C/W.
  - \* Modular design with mounting holes foreseen for direct mounting of a wide range of LED modules and COB's:
  - \* Diameter 48mm - Standard height 80mm , Other heights on request.
  - \* Extruded from highly conductive aluminum.
- Zhaga Book 3 Spot Light Modules Edison , Osram , Xicato ,Bridgelux ,Citizen ,Cree , Lumileds , Tridonic , Vossloh , Seoul ,LG , Lustrous ,Prolight ,Vossloh ,Samung ,Sharp ,Philips



- 1) Xicato XSM, XIM,XTM;
- 2) Bridgelux ESS, ESR, Vero 10, Vero 13, V-series;
- 3) Citizen CLL022-CLU024, CLL032-CLU034;
- 4) Cree XLamp CXA13xx, CXA15xx;
- 5) Lumileds Luxeon COB's 1203, 1204, 1205,Luxeon K arrays K12, K16;
- 6) Osram Soleriq S13, S19, E30
- 7) Seoul Semiconductor ZC6, ZC12;
- 8) Tridonic TALEXXmodule SLE modules.
- 9) LG Innotek LEMWM18 10W, 13W;
- 10) Edison EdiLex SLM and EdiLex II COB LED engines.
- 11) Lustrous Lustrous Series,Lustrous M Series,Lustrous V5 Series
- 12) Prolight Opto PABS, PABA, PACB, PANA
- 13) Luminus CLM-9,CXM-9,CHM-9 COB engines.
- 14) Vossloh-Schwabe LUGA Shop and LUGA C LED engines.
- 15) Samung LC013 COB LED engines.
- 16) SHARP Mini Zenigata LED engines.
- 17) Philips Fortimo SLM LED engines.

#### Order Information

Example:EtraLED-4880-B-#

Example:EtraLED-48 **1** - **2** - **3**

- 1** Hight (mm)
- 2** Anodising Color  
B-Black  
C-Clear  
Z-Custom
- 3** Mounting Options - see graphics for details Combinations available  
Ex.order code - 12  
means option 1 and 2 combined

MingFa recommends the use of a high Thermal conductive interface between the LED Module and the LED cooler. Either thermal grease, A thermal pad or a phase change thermal pad Thickness 0.1-0.15mm is recommended.



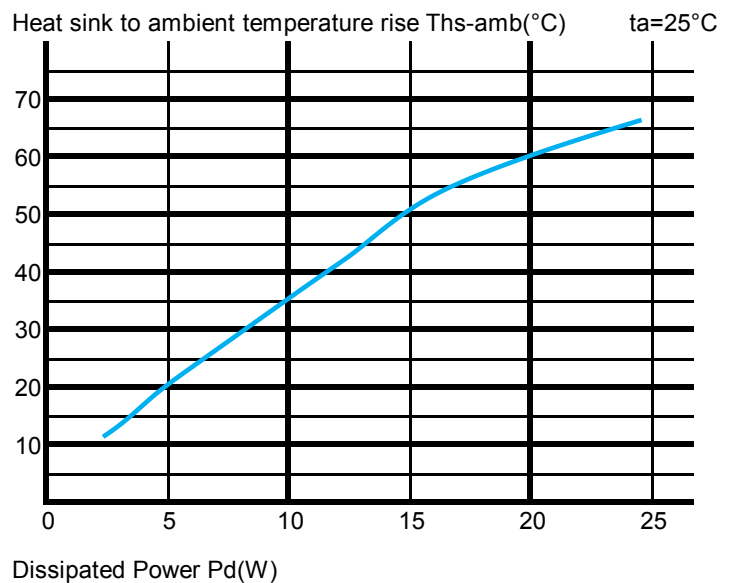
*EtraLED*

**EtraLED-4880 Modular Passive LED Star Heat Sink  $\Phi$ 48mm**

The thermal data table

	
<i>EtraLED-4880</i>	
<b>Model No.</b>	<b>EtraLED-4880</b>
<b>Size</b>	<b><math>\Phi</math>48xH80mm</b>
<b>Material</b>	<b>AL6063-T5</b>
<b>Finish</b>	<b>Black Anodized</b>
<b>Weight(g)</b>	<b>213</b>
<b>Thermal Wattage</b>	<b>14W</b>
<b>HeatsinkOs-a<sup>2</sup></b>	<b>58826</b>
<b>Heat Sink T<sub>Rise Above Ambient</sub> (°C/W)</b>	<b>3.6</b>

	Pd = Pe x (1-ηL)	Heat sink to ambient thermal resistance Rhs-amb (°C/W)	Heat sink toambienttemperature riseT <sub>hs-amb</sub> (°C)
		EtraLED-4880	EtraLED-4880
Dissipated Power Pd(W)	2.5	4.4	11
	4.5	4.2	19
	7	3.7	26
	9.5	3.7	35
	12	3.6	43
	17.5	3.1	53
	24	2.8	66



Notes:

- Mentioned models are an extraction of full product range.
- For specific mechanical adaptations please contact MingfaTech.
- MingfaTech reserves the right to change products or specifications without prior notice.