



for

LED

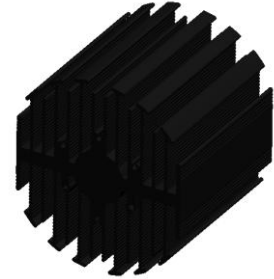


eLED

eLED-LUS-9580 Lustrous Modular Passive Star LED Heat Sink  $\Phi$ 95mm

### Features VS Benefits

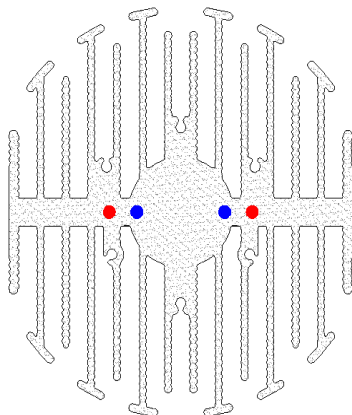
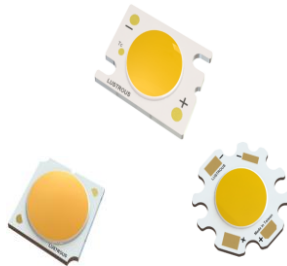
- \* The eLED-LUS-9580 Lustrous Modular Passive Star LED Heat Sinks are specifically designed for luminaires using the Lustrous LED engines.
- \* Mechanical compatibility with direct mounting of the LED engines to the LED cooler and thermal performance matching the lumen packages.
- \* For spotlight and downlight designs from 2100 to 5500 lumen.
- \* Thermal resistance range Rth 1.1°C/W.
- \* Modular design with mounting holes foreseen for direct mounting of Lustrous M series Coral series, LUSTRON series, LUSTRON 5 series, LUSTRON 6 series LED engines.
- \* Diameter 95mm - standard height 80mm Other heights on request.
- \* Extruded from highly conductive aluminum.



### Zhaga LED engine and radiator assembly is a unified future international standardization

- \* Below you find an overview of Lustrous COB's and LED modules which standard fit on the eLED Star LED Heat Sinks.
- \* In this way mechanical after work and related costs can be avoided, and lighting designers can standardize their designs on a limited number of Star LED Heat Sinks.

**LUSTROUS**  
Green Technology of Lighting



### Lustrous LED engines Mounting Options

#### Lustrous 6 Series Modules names:

LL613F1206-xxx ;  
LL620F1209-xxx ;

With Zhaga Book 3 for red indicator marks:  
BJB Holder:47.319.2021.50;  
Mounting with machine screws M3x6mm;

#### Lustrous 6 Series Modules names:

LL630D1210-xxx ;  
LL630F1210-xxx ;

With Zhaga Book 3 for red indicator marks:  
BJB Holder:47.319.2030.50;  
Mounting with machine screws M3x6mm;

#### Coral Series Modules names:

C108xxxxxx ;  
C113xxxxxx ;

For the red indicator marks.  
Direct mounting with machine screws M3x6mm;

**Mounting Options and Drawings & Dimensions**

**LUSTROUS**  
Green Technology of Lighting



Example:eLED-LUS-9580-B-1,2

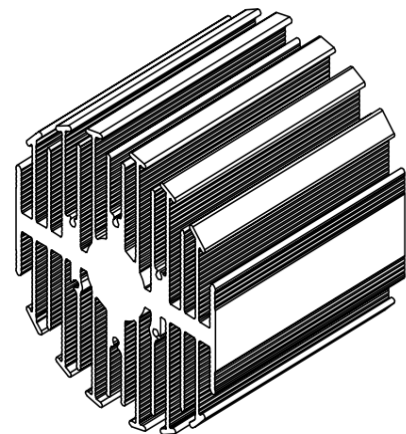
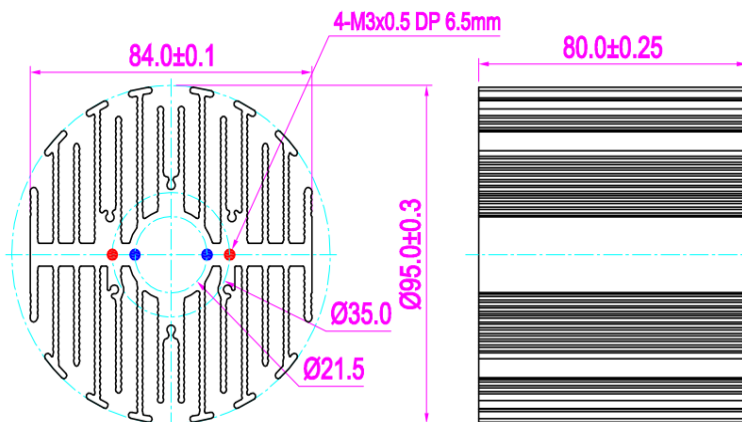
Example:eLED-LUS-95 **1** - **2** - **3**

- 1** Height (mm)
- 2** Anodising Color  
B-Black  
C-Clear  
Z-Custom
- 3** Mounting Options - see graphics for details Combinations available  
Ex.order code - 12  
means option 1 and 2 combined

**Notes:**

- Mentioned models are an extraction of full product range.
- For specific mechanical adaptations please contact MingfaTech.
- MingfaTech reserves the right to change products or specifications without prior notice.

MOUNTING OPTION	Module type	Holder NO.	THREAD	THREAD DEPTH	THREAD HOLE DISTANCE
1	Coral Series	/	M3	6mm	21.5mm/ 2-@180°
4	Lustrous 6 Series (LL613F1206-xxx; LL620F1209-)	BJB 47.319.2021.50	M3	6mm	35.0mm/ 2-@180°
	Lustrous 6 Series (LL630D1210-xxx; LL630F1210-)	BJB 47.319.2030.50			



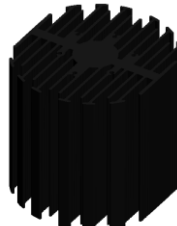
for

LED

eLED

eLED-LUS-9580 Lustrous Modular Passive Star LED Heat Sink  $\Phi$ 95mm

The thermal data table

	 <i>eLED-9580</i>
<b>Model No.</b>	<b>eLED-LUS-9580</b>
<b>Size</b>	<b><math>\Phi</math>95xH80mm</b>
<b>Material</b>	<b>AL6063-T5</b>
<b>Finish</b>	<b>Black Anodized</b>
<b>Weight(gr)</b>	<b>564.0</b>
<b>Thermal Wattage</b>	<b>49.2W</b>
<b>HeatsinkOs-a<sup>2</sup></b>	<b>170178</b>
<b>Heat Sink T Rise Above Ambient</b>	<b>1.10</b>

Dissipated Power Pd(W)	Heat sink to ambient thermal resistance Rhs-amb (°C/W)	
	Heat sink to ambient thermal resistance Rhs-amb (°C/W)	Heat sink to ambient temperature rise Ths-amb (°C)
	eLED-LUS-9580	
10	1.6	16
20	1.3	26
30	1.2	35
40	1.1	44
50	1.0	52

