



for

LED

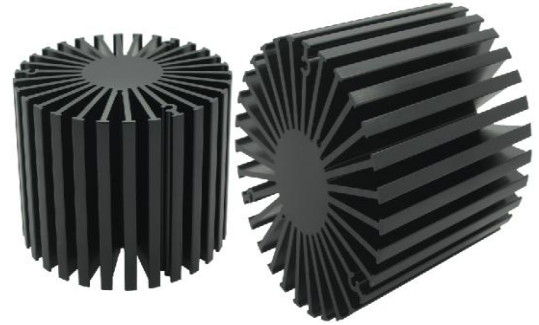


*SimpoleLED*

**SimpoleLED-LUS-8150 for Lustrous Modular Passive LED Cooler  $\Phi$ 81mm**

### Features VS Benefits

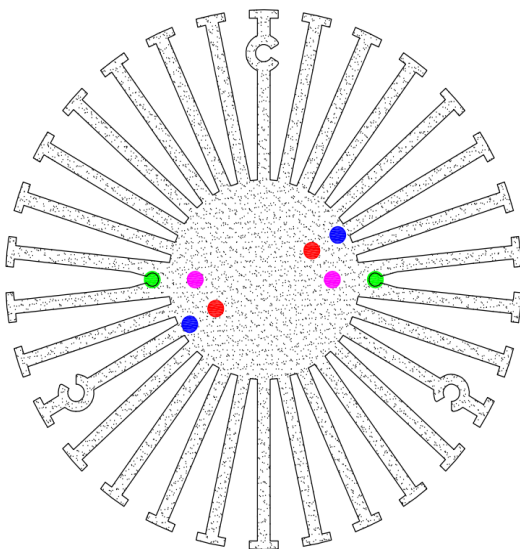
- \* The SimpoleLED-LUS-8150 Lustrous Modular Passive LED Coolers are specifically designed for luminaires using the Lustrous LED engines.
- \* Mechanical compatibility with direct mounting of the LED engines to the LED cooler and thermal performance matching the lumen packages.
- \* For spotlight and downlight designs from 900 to 3200 lumen.
- \* Thermal resistance range Rth 1.9°C/W.
- \* Modular design with mounting holes foreseen for direct mounting of Lustrous M series, Coral series, LUSTRON series, LUSTRON 5 series, LUSTRON 6 series engines.
- \* Diameter 81mm - standard height 50mm Other heights on request.
- \* Extruded from highly conductive aluminum.



### Lustrous LED engine and radiator assembly directly Mounting Options

- \* Below you find an overview of Lustrous COB's and LED modules which standard fit on the SimpoleLED cooler
- \* In this way mechanical after work and related costs can be avoided, and lighting designers can standardize their designs on a limited number of LED coolers.

**LUSTROUS**  
Green Technology of Lighting



### Lustrous COB Modules Mounting Options

**M series COB Modules Name :**

- M105xxPBxx ;
- M107xxPExx ;
- M109xxPFxx ;

**LUSTRON series COB Modules Name :**

- L104xxCHxx ;
- L106xxLCxx ;
- L112xxLHxx ;

**LUSTRON 5 series COB Modules Name :**

- L505xxQCxx ;

**LUSTRON 6 series COB Modules Name :**

- LL604F1202-xxx ;
- LL608D1202-xxx ;

Direct Mounting with 2 screws M2.5 x 6mm;  
Red indicator marks.

**Coral series COB Modules Name:**

- C108xxPFxx ;
- C113xxPGxx ;
- C620xxPIxx ;

Direct Mounting with 2 screws M3x 6mm;  
Pink indicator marks.

**Mounting Options and Drawings & Dimensions**

Example: SimpoleD-LUS-8150-B-3

Example: SimpoleD-LUS-81 **1** - **2** - **3**

**1** Height (mm)

**2** Anodising Color

B-Black

C-Clear

Z-Custom

**3** Mounting Options - see graphics for details Combinations available

Ex.order code - 12

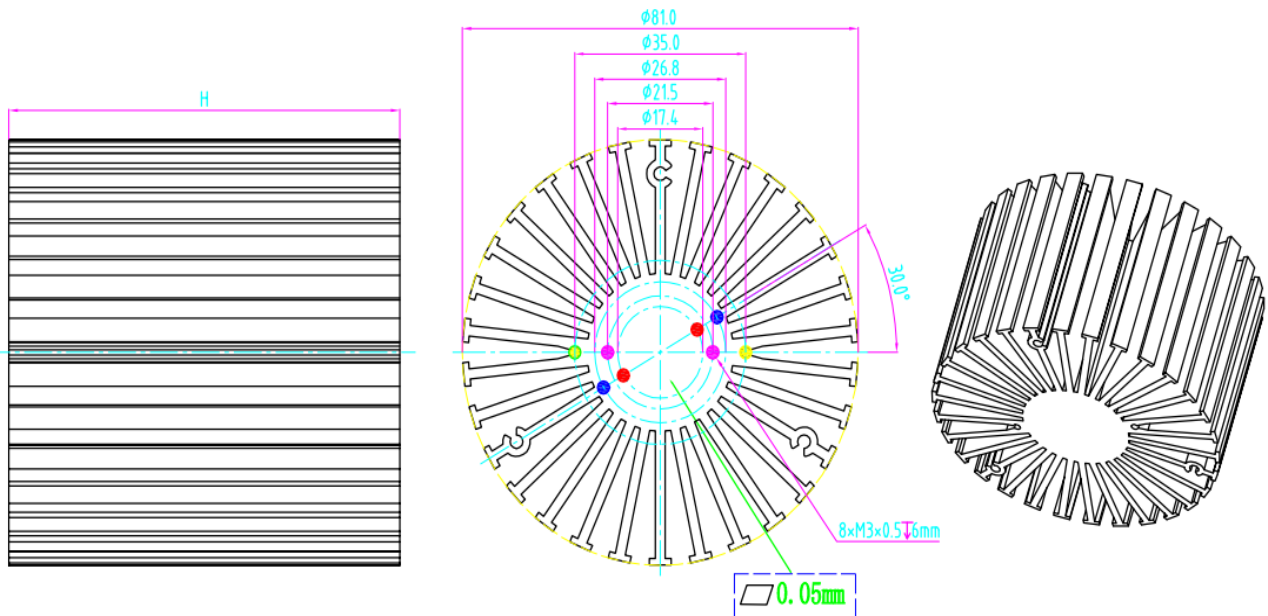
means option 1 and 2 combined

**LUSTROUS**  
Green Technology of Lighting

Notes:

- Mentioned models are an extraction of full product range.
- For specific mechanical adaptations please contact MingfaTech.
- MingfaTech reserves the right to change products or specifications without prior notice.

MOUNTING OPTION	Module type	Holder NO.	THREA D	THREAD DEPTH	THREAD HOLE DISTANCE
1	M105xxPBxx; M107xxPExx; M109xxPFxx; L104xxCHxx; L106xxLCxx; L112xxLHxx; L505xxQCxx; LL604F1202-xxx ; LL608D1202-xxx ;	/	M3	6mm	17.4mm/ 2-@180°
2	C108xxPFxx;C113xxPGxx;C620xxPlxx ;	/	M3	6mm	21.5mm/ 2-@180°
3	LL613F1206-xxx; LL620F1209-xxx ;	/	M3	6mm	26.8mm/ 2-@180°



*SimpoleD*

*SimpoleD-LUS-8150 for Lustrous Modular Passive LED Cooler Φ81mm*

The thermal data table

	 <i>SimpoleD-8150</i>
<b>Model No.</b>	<b>SimpoleD-LUS-8150</b>
<b>Size</b>	<b>Φ81xH50mm</b>
<b>Material</b>	<b>AL6063-T5</b>
<b>Finish</b>	<b>Black Anodized</b>
<b>Weight(g)</b>	<b>318.0</b>
<b>Thermal Wattage</b>	<b>26.5W</b>
<b>HeatsinkOs-a<sup>2</sup></b>	<b>94517</b>
<b>Heat Sink T Rise Above Ambient</b>	<b>1.9</b>

Dissipated Power Pd(W)	Pd = Pe x (1-ηL)	Heat sink to ambient thermal resistance Rhs-amb (°C/W)	Heat sink to ambient temperature rise Ths-amb (°C)
		SimpoleD-LUS-8150	SimpoleD-LUS-8150
6.0		2.60	15.6
12.0		2.18	26.2
18.0		1.97	35.6
24.0		1.83	44.0
30.0		1.72	51.8

