



for

LED



SimpoleD

SimpoleD-EDI-8150 for Edison Modular Passive LED Cooler Φ 81mm

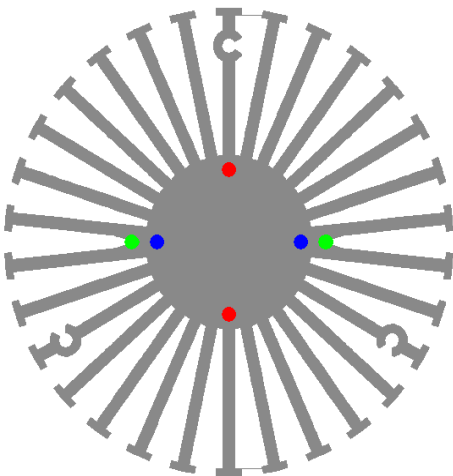
Features VS Benefits

- * The SimpoleD-EDI-8150 Edison Modular Passive LED Coolers are specifically designed for luminaires using the Edison LED engines.
- * Mechanical compatibility with direct mounting of the LED engines to the LED cooler and thermal performance matching the lumen packages.
- * For spotlight and downlight designs from 900 to 2700 lumen.
- * Thermal resistance range Rth 1.9°C/W.
- * Modular design with mounting holes foreseen for direct mounting of Edison EdiLex SLM and EdiLex II COB LED engines.
- * Diameter 81mm - standard height 50mm Other heights on request.
- * Extruded from highly conductive aluminum.



Zhaga LED engine and radiator assembly is a unified future international standardization

- * Below you find an overview of Edison engines COB's and LED modules which standard fit on the SimpoleD coolers.
- * In this way mechanical after work and related costs can be avoided, and lighting designers can standardize their designs on a limited number of LED coolers.



Edison LED engines Mounting Options

For the EdiLex Spot Light Module (SLM).

- 5PHR22WW0010002;
- 5PHR22NWS0010002;

Zhaga Book3 Green indicator marks:

Direct mounting with machine screws M3x8mm;

For the EdiLex II HM Series LED engines.

- 2PHM16WW27P13001; 2PHM30WW27P13001;
- 2PHM16NW27P13001; 2PHM30NW27P13001;
- 2PHM16CW27P13001; 2PHM30CW27P13001;

For the EdiLex II HM CRI90 Series LED engines.

- 2PHM16WW38P13001; 2PHM30WW38P13001;
- 2PHM16NW38P13001; 2PHM30NW38P13001;
- 2PHM16CW38P13001; 2PHM30CW38P13001;

For the EdiLex II MV Series LED engines.

- 2PMV20WW27P13001; 2PMV20CW27P13001;
- 2PMV20NW27P13001;

For the EdiLex II SL Series LED engines.

- 2PSL30MW38P13001; 2PSL30RW27P13001;
- 2PSL30AW27P13001; 2PSL30SW27P13001;

Zhaga Book3 Green indicator marks:

- BJB holder:47.319.2021.50;
- AAG.STUCCHI holder:8101-G2;
- Mounting with machine screws M3x8mm;

Edison LED engines directly Mounting Options

For the EdiLex II SD Series LED engines.

- 2PSD24WW01P02001; 2PSD24CW06P02001;
- 2PSD24NW05P02001;

For the EdiLex II LC Series LED engines.

- 2PLC24WW05P02001; 2PLC24CW06P02001;
- 2PLC24NW05P02001;

Direct mounting with machine screws M3x6mm;
Blue indicator marks.

Please refer to the "<http://www.edison-opto.com>" data provided on the manual.

Tel:+86-769-39023131
E-fax:+86-(020)28819702 ext:22122
Email:sales@mingfatech.com
Http://www.heatsinkled.com
Http://www.mingfatech.com





for

LED



SimpoleD

SimpoleD-EDI-8150 for Edison Modular Passive LED Cooler Ø81mm

Mounting Options and Drawings & Dimensions

Example: SimpoleD-EDI-8150-B-3

Example: SimpoleD-EDI-81 **1** - **2** - **3**

1 Height (mm)

2 Anodising Color

B-Black

C-Clear

Z-Custom

3 Mounting Options - see graphics for details Combinations available

Ex.order code - 12

means option 1 and 2 combined

Notes:

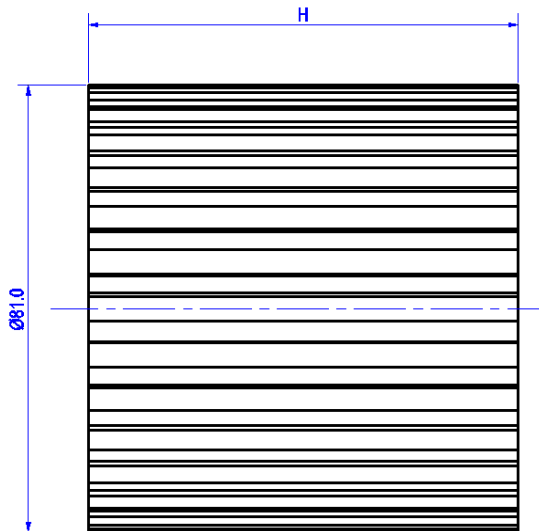
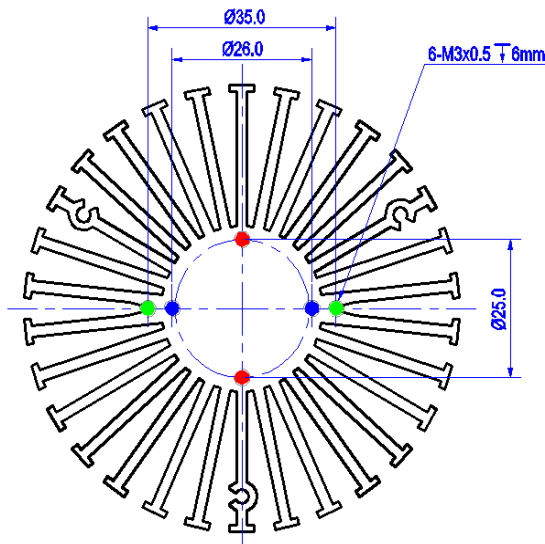
- Mentioned models are an extraction of full product range.
- For specific mechanical adaptations please contact MingfaTech.
- MingfaTech reserves the right to change products or specifications without prior notice.



STUCCHI
Ideas are made of light



MOUNTING OPTION	Module type	Holder NO.	THREAD	THREAD DEPTH	THREAD HOLE DISTANCE
1	EdiLex II CAC	Ideal:50-2000CR	M3	6mm	25.0mm/ 2-@180°
		BJB:47.319.6120.50			
2	EdiLex II SD EdiLex II HV EdiLex II LC	/	M3	6mm	26.0mm/ 2-@180°
3	EdiLex II HM	AAG.STUCCHI:8101-G2	M3	6mm	35.0mm/ 2-@180°
	EdiLex II MV	BJB:47.319.2021.50			
	EdiLex II SLM	/			



Tel:+86-769-39023131
E-fax:+86-(020)28819702 ext:22122
Email:sales@mingfatech.com
Http://www.heatsinkled.com
Http://www.mingfatech.com



SimpoleD

SimpoleD-EDI-8150 for Edison Modular Passive LED Cooler Φ81mm

The thermal data table

	 <i>SimpoleD-8150</i>
Model No.	SimpoleD-EDI-8150
Size	Φ81xH50mm
Material	AL6063-T5
Finish	Black Anodized
Weight(gr)	318.0
Thermal Wattage	26.5W
HeatsinkOs-a²	94517
Heat Sink T Rise Above Ambient	1.9

Dissipated Power Pd(W)	Pd = Pe x (1-ηL)	Heat sink to ambient thermal resistance Rhs-amb (°C/W)	Heat sink to ambient temperature rise Ths-amb (°C)
		SimpoleD-EDI-8150	SimpoleD-EDI-8150
6.0		2.60	15.6
12.0		2.18	26.2
18.0		1.97	35.6
24.0		1.83	44.0
30.0		1.72	51.8

