

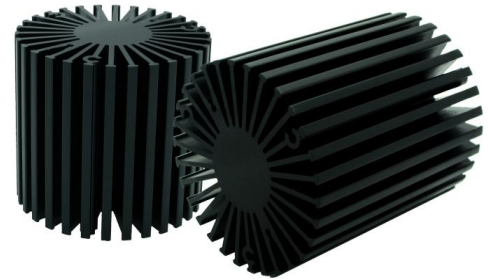


SimpoleLED

SimpoleLED-PRO-5850 for Prolight Modular Passive LED Cooler Φ 58mm

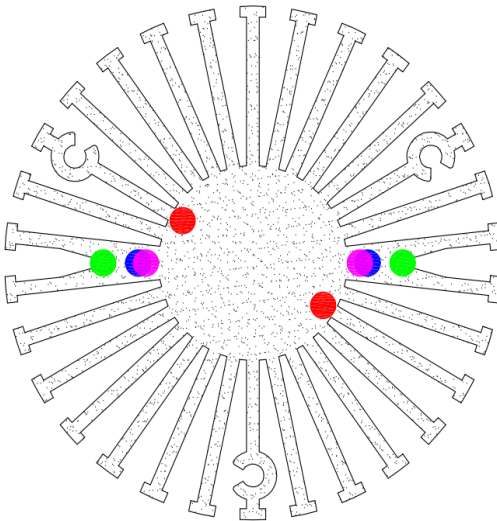
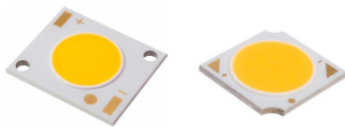
Features VS Benefits

- * The SimpoleLED-PRO-5850 Prolight Modular Passive LED Coolers are specifically designed for luminaires using the Prolight COB engines.
- * Mechanical compatibility with direct mounting of the LED engines to the LED cooler and thermal performance matching the lumen packages.
- * For spotlight and downlight designs from 400 to 1600 lumen.
- * Thermal resistance range Rth 3.7°C/W.
- * Modular design with mounting holes foreseen for direct mounting of Prolight CI Series, BI SERIRSBS SERIRS and N SERIRS engines.
- * Diameter 58mm - standard height 50mm Other heights on request.
- * Extruded from highly conductive aluminum.



Zhaga LED engine and radiator assembly is a unified future international standardization

- * Below you find an overview of Prolight COB's and LED modules which standard fit on the SimpoleLED coolers.
- * In this way mechanical after work and related costs can be avoided, and lighting designers can standardize their designs on a limited number of LED coolers.



Prolight LED Spotlight COB engines Mounting Options

COB CI Series Modules names:

- PACB-5xxx-xxxx ;
- PACB-7xxx-xxxx ;
- PACB-9xxx-xxxx ;

Zhaga Book 11

Pink indicator marks:
BJB Holder:47.319.6060.50;

Zhaga Book3

Green indicator marks:
BJB Holder:47.319.2040.50
Mounting with machine screws M3x8mm ;

Red indicator marks ;
Direct mounting machine screws M3x6mm ;

COB BI SERIRS Module names:

- PABA-10xxx-xxxx ;
- PABA-15xxx-xxxx ;

Zhaga Book3

Green indicator marks:
BJB Holder:47.319.2040.50;
Mounting with machine screws M3x8mm;

Blue indicator marks:
Direct mounting with machine screws M3x6mm;

COB BS SERIRS Modlue names:

- PABS-6xxx-xxxx ;
- PABS-9xxx-xxxx ;

Red indicator marks:
Direct mounting with machine screws M3x6mm;

COB N SERIRS Module names:

- PANA-10xxx-xxxx ;
- PANA-12xxx-xxxx ;

Blue indicator marks:
Direct mounting with machine screws M3x6mm;





SimpoleD

SimpoleD-PRO-5850 for Prolight Modular Passive LED Cooler Φ 58mm

Mounting Options and Drawings & Dimensions

Example:SimpoleD-PRO-5850-B-3

Example:SimpoleD-PRO-58 **1** - **2** - **3**

1 Height (mm)

2 Anodising Color

B-Black

C-Clear

Z-Custom

3 Mounting Options - see graphics for details Combinations available

Ex.order code - 12

means option 1 and 2 combined

Notes:

- Mentioned models are an extraction of full product range.
- For specific mechanical adaptations please contact MingfaTech.
- MingfaTech reserves the right to change products or specifications without prior notice.

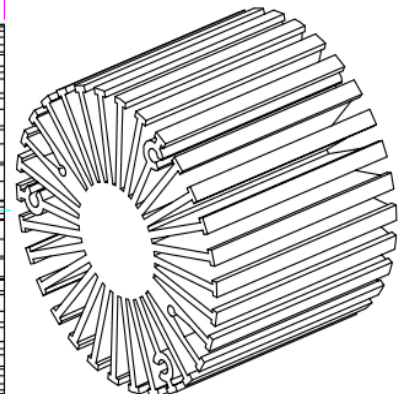
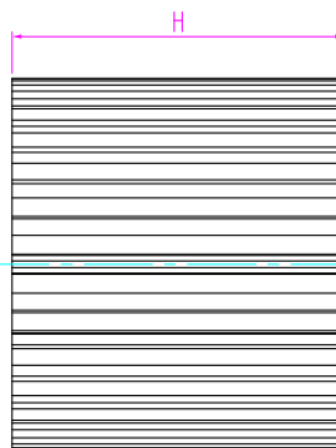
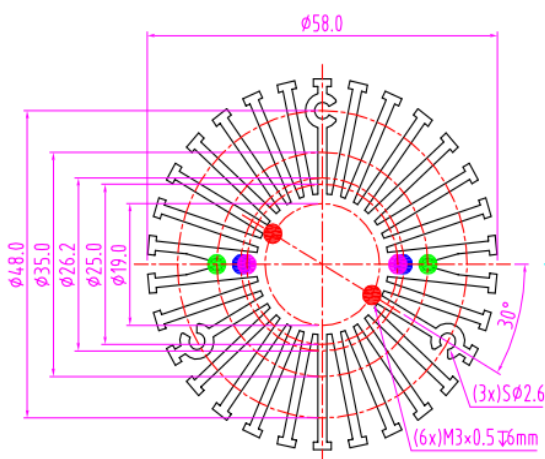


Prolight Opto
Technology Corporation



Note ! : option 2 and option 3 can't not be combined .

MOUNTING OPTION	Module type	Holder NO.	THREAD	THREAD DEPTH	THREAD HOLE DISTANCE
1	COB CI Series COB BS SERIRS	/	M3	6mm	19mm/ 2-@180°
2	COB CI Series	BJB:47.319.6060.50;	M3	6mm	25mm/ 2-@180° Zhaga Book 11
3	COB N SERIRS COB BI SERIRS	/	M3	6mm	27mm/ 2-@180°
4	COB CI Series COB BI SERIRS	BJB:47.319.2040.50;	M3	6mm	35mm/ 2-@180° Zhaga Book3



SimpoLED

SimpoLED-PRO-5850 for Prolight Modular Passive LED Cooler Φ 58mm

The thermal data table

	 <i>SimpoLED5850</i>
Model No.	SimpoLED-PRO-5850
Size	Φ58xH50mm
Material	AL6063-T5
Finish	Black Anodized
Weight(gr)	174.0
Thermal Wattage	12.2W
HeatsinkΘs-a²	65040
Heat Sink T Rise Above Ambient	3.7

Dissipated Power Pd(W)	Pd = Pe x (1- η L)	Heat sink to ambient thermal resistance Rhs-amb ($^{\circ}$ C/W)	Heat sink to ambient temperature rise Ths-amb ($^{\circ}$ C)
		SimpoLED-PRO-5850	SimpoLED-PRO-5850
3.0		4.83	14.5
6.0		4.16	25.0
9.0		3.82	34.4
12.0		3.58	43.0
15.0		3.40	51.0

