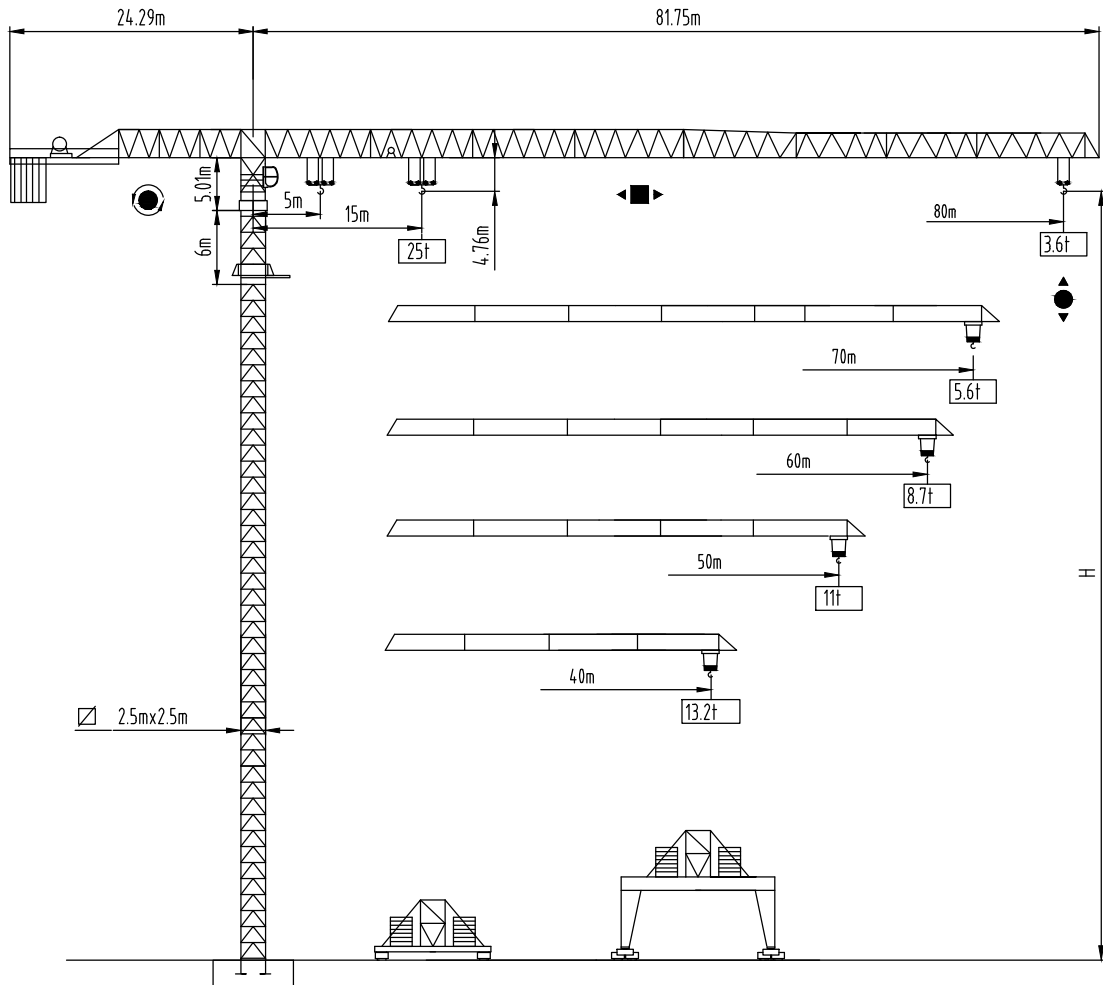


Autodesk



沈阳三洋建筑机械有限公司
SHENYANG SANYO BUILDING MACHINERY CO., LTD

TOWER CRANE QTP型550tm
(R80/36)



Autodesk

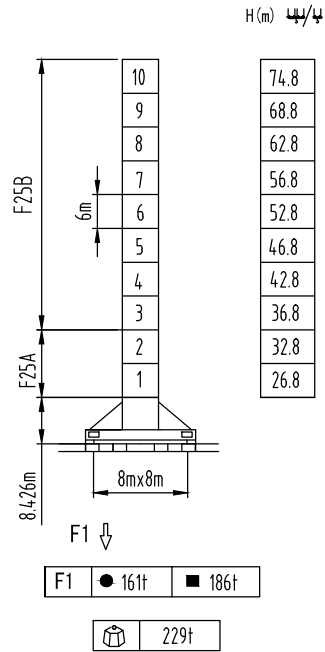
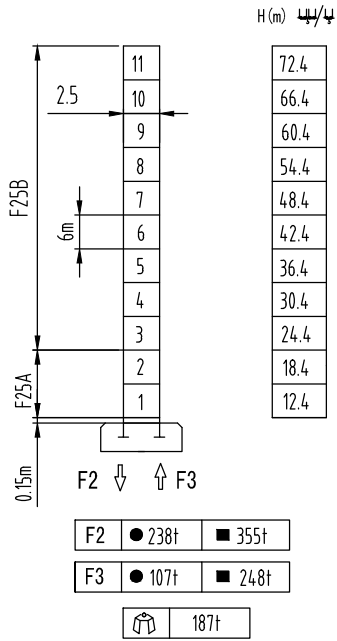
Autodesk

Autodesk



塔身截面 Mast 2.5m x 2.5m

40-80m

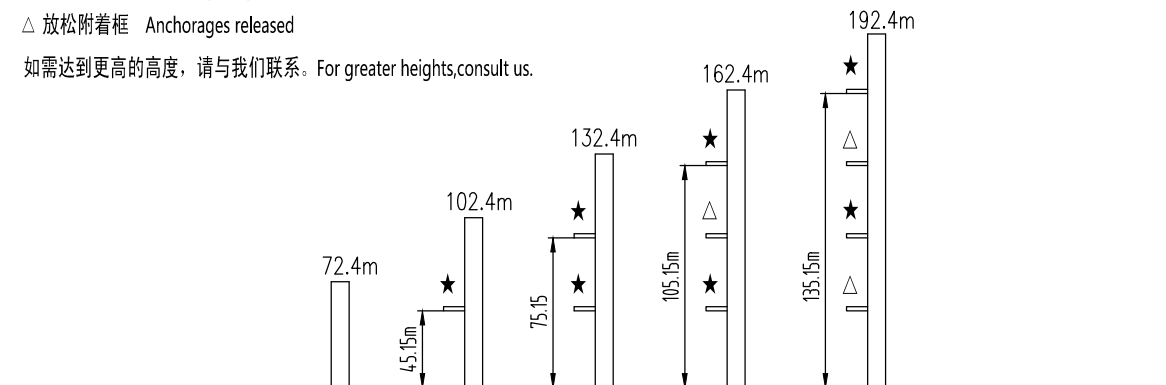


固定式附着高度 Anchoring height of stationary crane

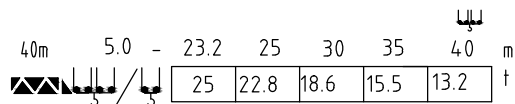
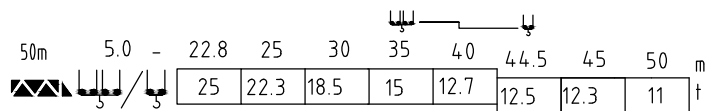
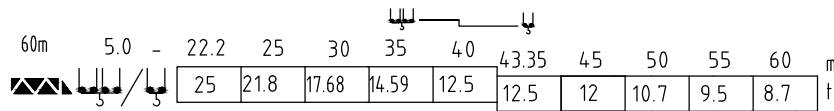
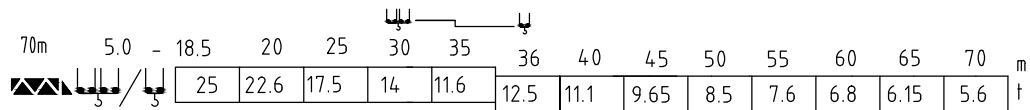
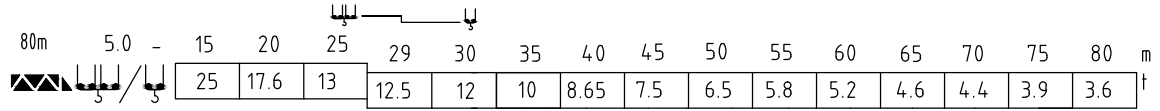
★ 紧固附着框 Anchorages tightened

△ 放松附着框 Anchorages released

如需达到更高的高度, 请与我们联系。For greater heights, consult us.

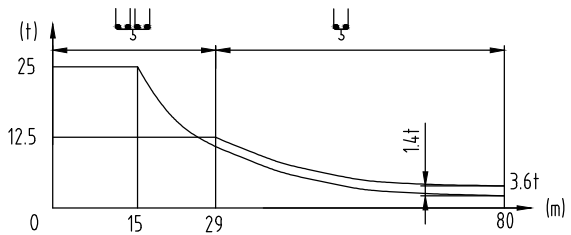


载荷特性 Load diagrams

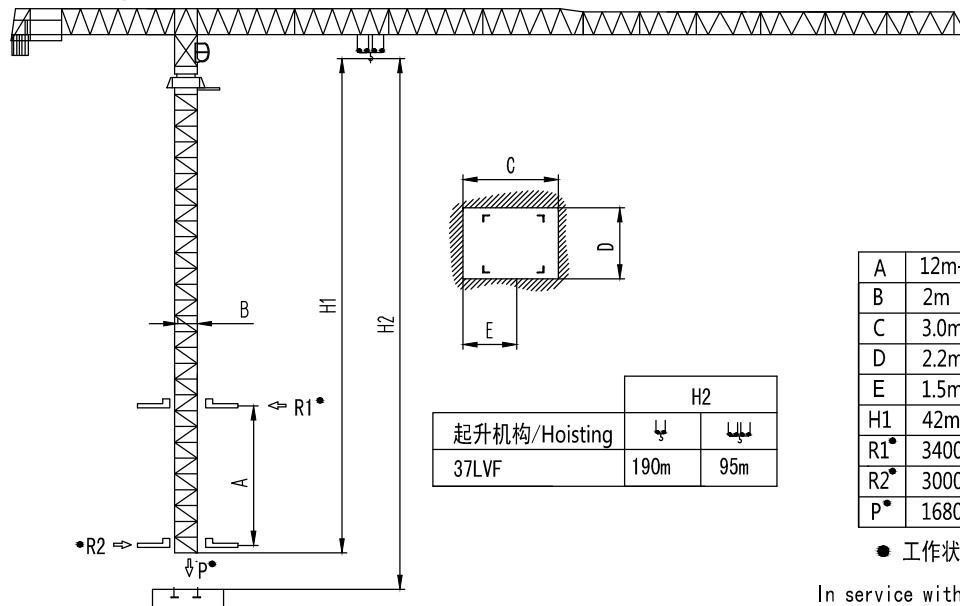


$\text{Load Diagram} = \text{Load Diagram} - 1.4t$

标准小车可使用 2/4倍率绳 standard trolley 2/4 fall.
 使用四倍率时, 应从二倍率的载荷中减去1.4吨
 When using Load Diagram subtract 1.4t from the loads Load Diagram



内爬塔机 Climbing crane



起升机构/Hoisting	H2	
	Load Diagram	Load Diagram
37LVF	190m	95m

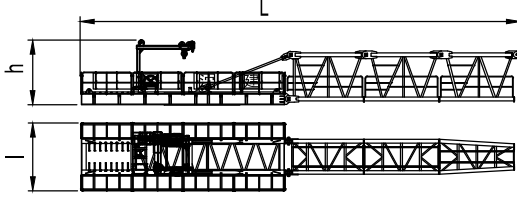
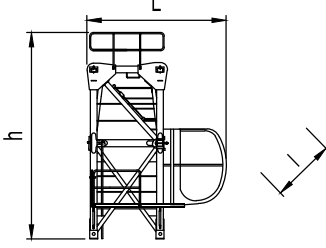
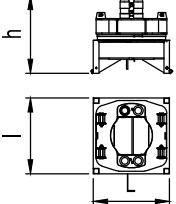
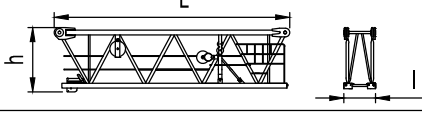
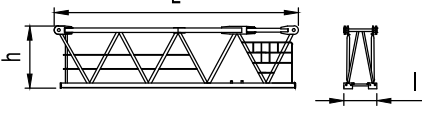
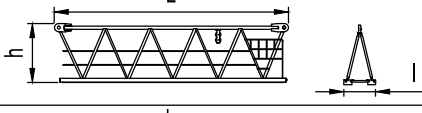
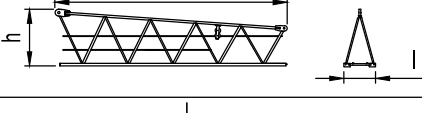
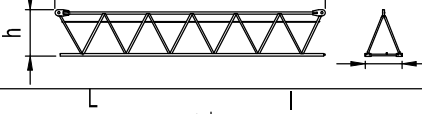
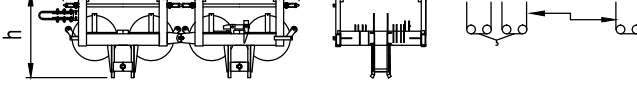
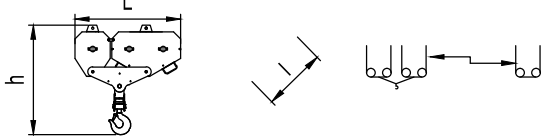
A	12m-19m
B	2m
C	3.0m
D	2.2m
E	1.5m
H1	42m
R1*	34000Kg
R2*	30000Kg
P*	168000Kg

* 工作状态无系数

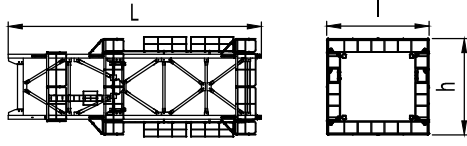
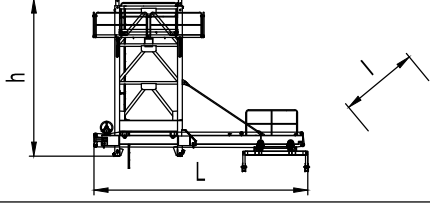
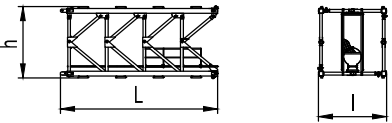
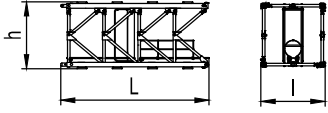
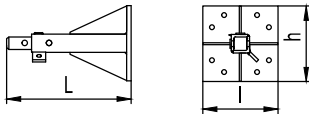
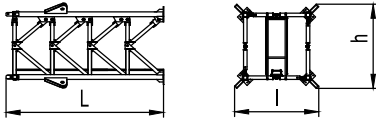
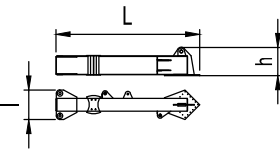
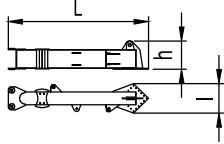
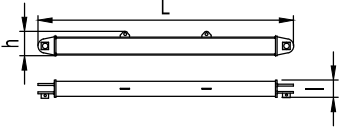
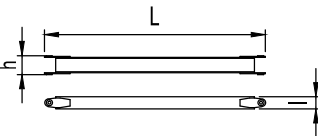
In service without coefficient

Autodesk









外形尺寸重量表 Dimensions weights

塔机回转部分 Slewing		L(m)	l(m)	h(m)	Kg	
平衡臂 Counter-jib		23.4	3.62	3.43	18686	
塔头 Cat-head		4.12	4.41	6.58	8890	
回转机构 Slewing mechanism		2.7	2.5	2.7	12766	
起重臂节 Jib section		1	10.43	1.4	2.85	8964
起重臂节 Jib section		2	10.38	1.4	2.64	6101
起重臂节 Jib section		3 4 5	10.38 10.36 10.33	1.4 1.4 1.4	2.64 2.62 2.54	4380 3650 3239
起重臂节 Jib section		6	10.29	1.4	2.55	2354
起重臂节 Jib section		7 8	10.26 10.26	1.4 1.4	1.8 1.77	1691 1110
变幅小车 Trolley		4.18	1.65	1.52	1249	
吊钩滑轮组 Hook assembly		2.63	0.18	2.73	1041	

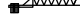
Autodesk

顶升装置 Telescoping equipment		L(m)	l(m)	h(m)	Kg
顶升套架 Telescopic cage		13.46	5.45	5.13	18280
顶升节 telescopic mast		8.59	4.42	6.27	11120
塔身部分 Mast		L(m)	l(m)	h(m)	Kg
加强节 Reinforcing mast		6.27	2.72	2.85	7945
标准节 Standard mast		6.27	2.72	2.85	6850
底部 Base		L(m)	l(m)	h(m)	Kg
固定支脚 Fixing angles		1.33	0.8	0.8	528
底架塔节 Chassis-mast		6.29	3.36	3.36	11070
底梁 I Girder-I		6.11	1.26	1.2	3722
底梁 II Girder-II		5.96	1.26	1.2	3414
底架斜撑杆 Obliquel legs		5.44	0.37	0.52	875
底架拉杆 Tie-bar		4.7	0.26	0.41	706

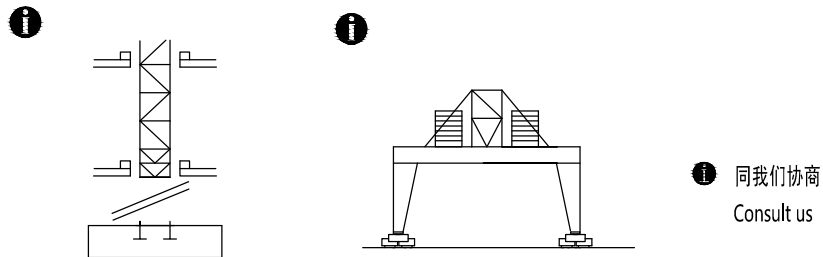
Autodesk

机构特性 Mechanisms specification													 m	Kw	
起升 Hoisting		90LVF	m/min	0-3.6	0-18	0-36	0-54	0-72	0-1.8	0-9	0-18	0-27	0-36	800	90
		†	t	12.5	12.5	12.5	6.25	3.125	25	25	25	12.5	6.25		
变幅 Trolleying		11TVF	m/min	0-4.3									11		
回转 Slewing		7.5SVF	r/min	0-0.6									7.5x3		
		14.5SVT											14.5Nm x 3		
行走 Travelling		5.2TRVF	m/min	0-15									5.2x6		
 电源		Power Supply		380V 50Hz / 440V 60Hz											
KVA 供电容量		Necessary Electric Power		200KVA											

平衡臂配重
Counter-jib ballast

		(t)
80m	24.29m	31.2
70m	24.29m	29.4
60m	24.29m	26.8
50m	24.29m	21.2
40m	24.29m	14.6

可变换的其它安装方式
Mounting possibilities



F 反力	● 工作状态	In service	⊕ 自重	不带载荷及配重，最大臂长及标准高度时的自重。
Reactions	■ 非工作状态	Out of service	Self-load	Without load and counter-weight with longest jib and standard height