



for

LED

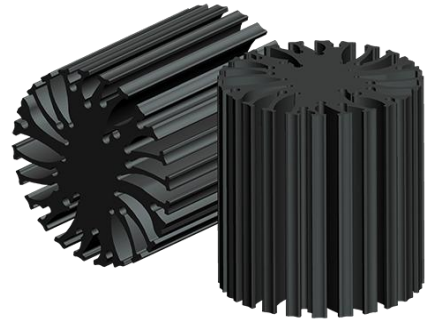


EtraLED

EtraLED-VOS-4850 Vossloh-Schwabe Modular Passive Star LED Heat Sink  $\Phi$ 48mm

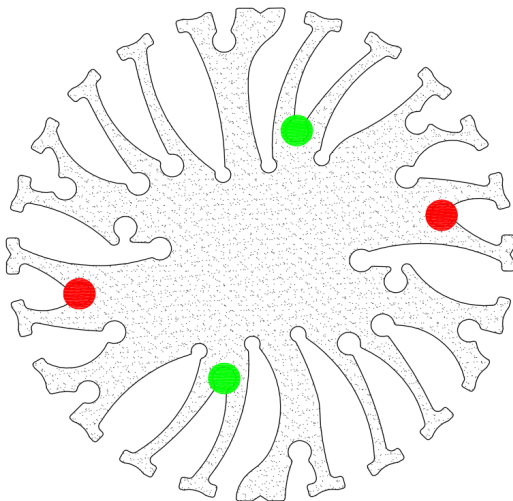
### Features VS Benefits

- \* The EtraLED-VOS-4850 Vossloh-Schwabe Modular Passive Star LED Heat Sinks are specifically designed for luminaires using the Vossloh-Schwabe LED engines.
- \* Mechanical compatibility with direct mounting of the LED engines to the LED cooler and thermal performance matching the lumen packages.
- \* For spotlight and downlight designs from 600 to 1500 lumen.
- \* Thermal resistance range Rth 4.2°C/W.
- \* Modular design with mounting holes foreseen for direct mounting of Vossloh-Schwabe LUGA Shop and LUGA C LED engines.
- \* Diameter 48mm - standard height 50mm Other heights on request.
- \* Extruded from highly conductive aluminum.



### Zhaga LED engine and radiator assembly is a unified future international standardization

- \* Below you find an overview of Vossloh-Schwabe COB's and LED modules which standard fit on the EtraLED Star LED Heat Sinks.
- \* In this way mechanical after work and related costs can be avoided, and lighting designers can standardize their designs on a limited number of Star LED Heat Sinks.



Vossloh-Schwabe LED engines for which Zhaga book3 LED Modules holders are available.

For the LUGA Shop 2014 Module.

- WU-M-484-827;
- WU-M-484-830;
- WU-M-484-835;
- WU-M-484-840;
- WU-M-485-827;
- WU-M-485-830;
- WU-M-485-835;
- WU-M-485-840;

For the LUGA Shop 2014 PW Module.

- WU-M-484-831-PW;
- WU-M-485-831-PW;

For the LUGA Shop 2014 HiCRI LED Module.

- WU-M-484-927;
- WU-M-484-930;
- WU-M-484-935;
- WU-M-484-940;
- WU-M-485-927;
- WU-M-485-930;
- WU-M-485-935;
- WU-M-485-940;

For the LUGA Shop 2014 PW Module.

- WU-M-484-931-PW;
- WU-M-485-931-PW;

Zhaga Book3 Red indicator marks:

Direct mounting with machine screws M3x6mm;

For the LUGA C 2015 LED engines.

- DMC104Cxxx;
- DMC115Cxxx;
- DMC118Cxxx;

Zhaga Book3 Red indicator marks:

AAG.STUCCHI holder:8101-G2;  
 BJB holder:47.319.2021.50;  
 Mounting with machine screws M3x6mm;

Please refer to the "www.vossloh-schwabe.com" data provided on the manual.



for

LED



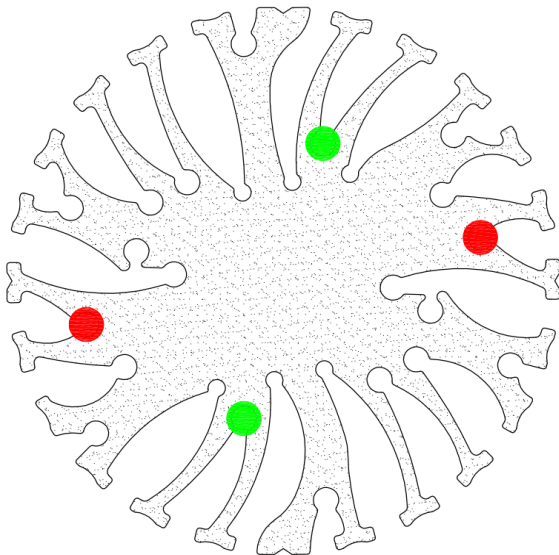
EtraLED

EtraLED-VOS-4850 Vossloh-Schwabe Modular Passive tar LED Heat Sink  $\Phi$ 48mm

VS LIGHTING SOLUTIONS



STUCCHI  
Ideas are made of light



Vossloh-Schwabe LED engines for which Zhaga book3 LED Modules holders are available.

For the LUGA Shop 2014 PCB LED engines and the holder.

DMS088C27E1;  
DMS088C30E1;  
DMS088C35E1;  
DMS088C40E1;

DMS128C27E1;  
DMS128C30E1;  
DMS128C35E1;  
DMS128C40E1;

For the LUGA Shop 2014 PCB PW LED engines and the holder.

DMS088C31EP1;  
DMS128C31EP1;

For the LUGA Shop 2014 PCB HiCRI LED engines and the holder.

DMS088D27E1;  
DMS088D30E1;  
DMS088D35E1;  
DMS088D40E1;

DMS128D27E1;  
DMS128D30E1;  
DMS128D35E1;  
DMS128D40E1;

For the LUGA Shop 2014 PCB PW LED engines and the holder.

DMS088D31EP1;  
DMS128D31EP1;

Zhaga Book3 Red indicator marks:  
Direct mounting with machine screws M3x6mm;

Please refer to the "www.vossloh-schwabe.com" data provided on the manual.

Vossloh-Schwabe LED engines for which Zhaga book11 LED Modules holders are available.

For the LUGA C 2015 LED engines.  
(AAG.STUCCHI holder:8100-G2); (BJB holder:47.319.6060.50);

DMC112C27E;  
DMC112C30E;  
DMC112C40E;

Zhaga Book11 Green indicator marks:  
Direct mounting with machine screws M3x8mm;

Please refer to the "www.vossloh-schwabe.com" data provided on the manual.

### Mounting Options and Drawings & Dimensions

Example:EtraLED -VOS-4850-B-3

Example:EtraLED -VOS-48 **1** - **2** - **3**

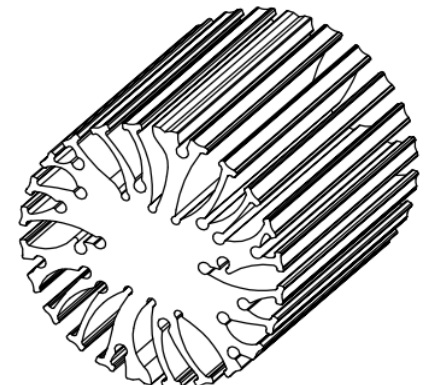
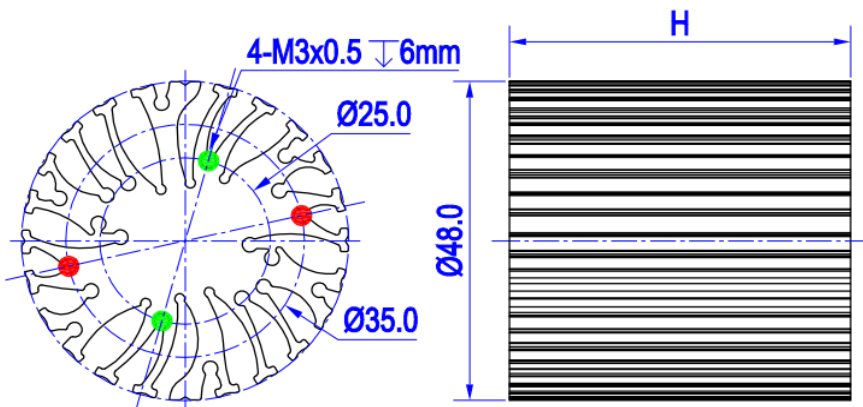
- 1** Height (mm)
- 2** Anodising Color  
B-Black  
C-Clear  
Z-Custom
- 3** Mounting Options - see graphics for details Combinations available  
Ex.order code - 12  
means option 1 and 2 combined

#### Notes:

- Mentioned models are an extraction of full product range.
- For specific mechanical adaptations please contact MingfaTech.
- MingfaTech reserves the right to change products or specifications without prior notice.



MOUNTING OPTION	Module type	Holder NO.	THREAD	THREAD DEPTH	THREAD HOLE DISTANCE
1	LUGA C	BJB (47.319.6060.50)	M3	8mm	25.0mm/ 2-@180°
		AAG.STUCCHI (8100-G2)			
2	LUGA C	BJB (47.319.2021.50)	M3	8mm	35.0mm/ 2-@180°
		AAG.STUCCHI (8101-G2)			
	LUGA Shop 2014 PCB	Vossloh-Schwabe			
	LUGA Shop 2014	/			



The thermal data table

	 <i>EtraLED-4850</i>
<b>Model No.</b>	<b>EtraLED-VOS-4850</b>
<b>Size</b>	<b><math>\Phi</math>48xH50mm</b>
<b>Material</b>	<b>AL6063-T5</b>
<b>Finish</b>	<b>Black Anodized</b>
<b>Weight(gr)</b>	<b>134.0</b>
<b>Thermal Wattage</b>	<b>12.0W</b>
<b>HeatsinkOs-a<sup>2</sup></b>	<b>36868</b>
<b>Heat Sink T Rise Above Ambient</b>	<b>4.2</b>

	Pd = Pe x (1- $\eta$ L)	Heat sink to ambient thermal resistance Rhs-amb (°C/W)	Heat sink to ambient temperature rise Ths-amb (°C)
		EtraLED-VOS-4850	EtraLED-VOS-4850
Dissipated Power Pd(W)	2.5	5.6	14.0
	4.5	5.3	24.0
	7.0	4.6	32.0
	9.5	4.3	41.0
	12.0	4.1	49.0
	18.0	3.7	65.0

